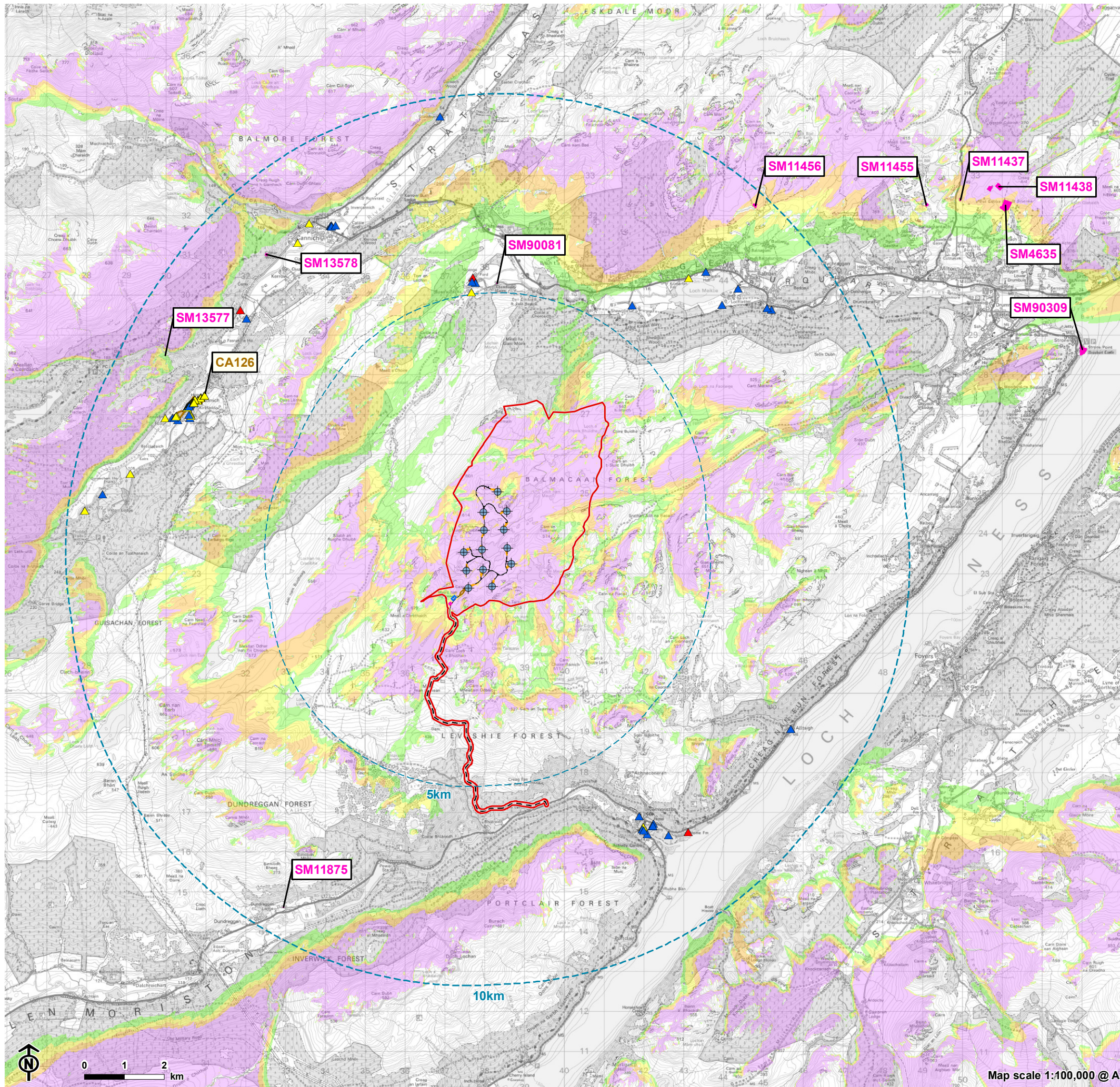


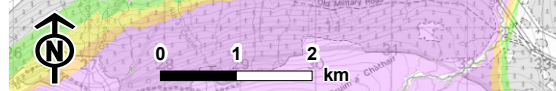
Figure 10.2: The location of designated heritage assets in the Outer Study Area and those beyond the study area whose setting may be effected by the Proposed Development



- Site boundary
- Turbine
- Construction compound
- Substation
- Borrow pit
- Temporary hardstanding
- Permanent hardstanding
- Met mast
- New access track
- Existing access track
- Designated heritage assets**
- Inner study area - 5km from outermost turbines
- Outer study area - 10km from outermost turbines
- Listed Building - Category A
- Listed Building - Category B
- Listed Building - Category C
- Scheduled Monument (SM)
- Tomich Village Conservation Area (CA126)
- Theoretical turbine visibility**
- 1-4 turbines visible
- 5-7 turbines visible
- 8-10 turbines visible
- 11-13 turbines visible

Notes:

The ZTV is calculated to turbine tip height (180-200m) from a viewing height of 2m above ground level. The terrain model assumes bare ground and is derived from OS Terrain 5 height data (obtained from Emapsite in November 2022). Earth curvature and atmospheric refraction have been taken into account. The ZTV was calculated using ArcMap 10.8.1 software.



Map scale 1:100,000 @ A3