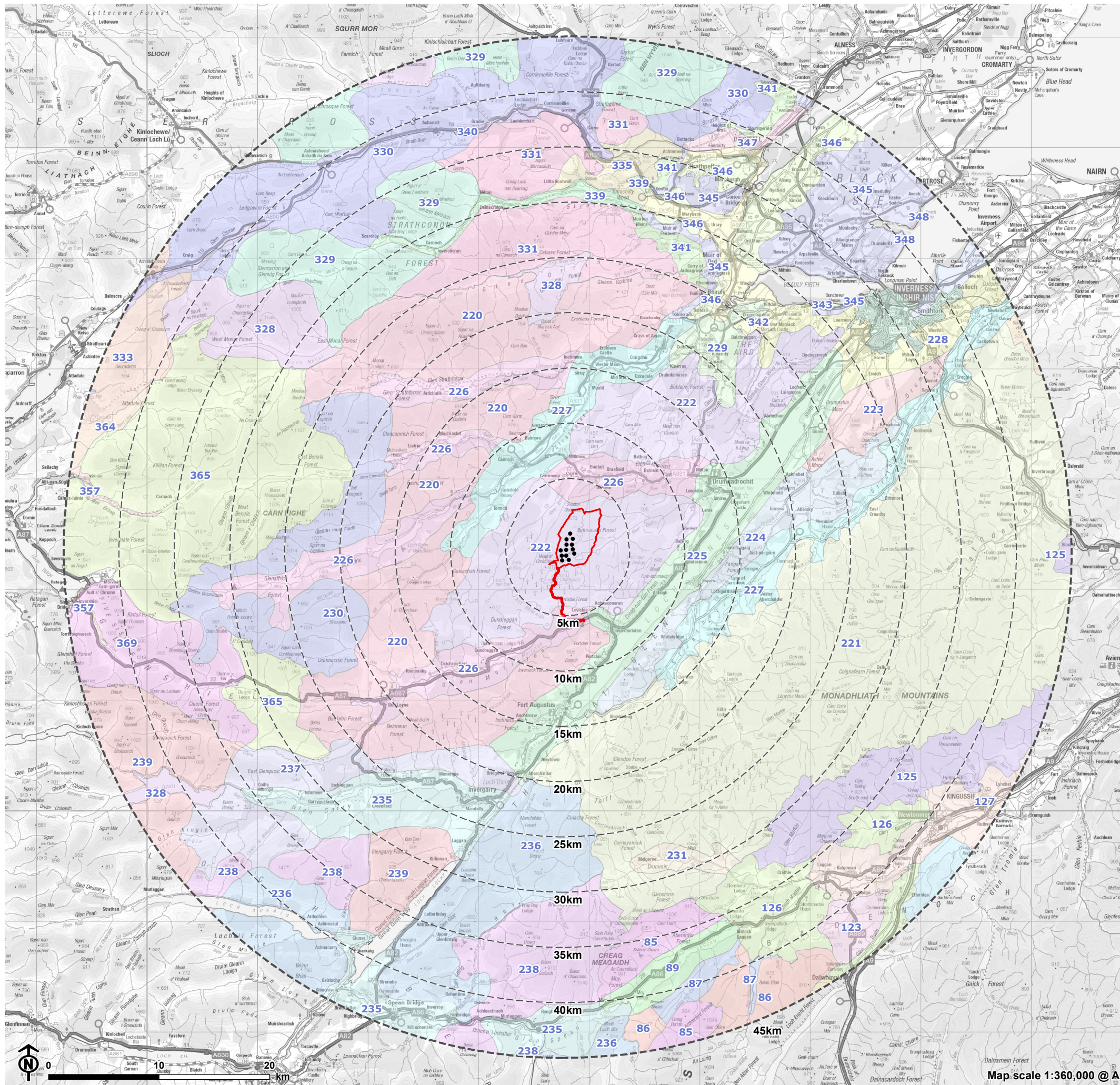


Figure 6.5a: Landscape Character Types



- Site boundary
- Turbine
- 5km intervals from outermost turbines
- LVIA study area 45km from outermost turbines

Landscape Character Types (NatureScot 2019)

<ul style="list-style-type: none"> 0: Urban 85: Isolated Mountain Plateau 86: Smooth Rounded Hills - Badenoch & Strathspey 87: Small Craggy Knolls and Hills 88: Loch and Glen 89: Broad Loch and Glen 123: Smooth Rounded Hills - Cairngorms 124: Summits and Plateaux - Cairngorms 125: Rolling Uplands - Cairngorms 126: Upland Glen - Cairngorms 127: Upland Strath 220: Rugged Massif - Inverness 221: Rolling Uplands - Inverness 222: Rocky Moorland Plateau - Inverness 223: Flat Moorland Plateau with Woodland 224: Farmed and Wooded Foothills 225: Broad Steep-Sided Glen 226: Wooded Glen - Inverness 227: Farmed Strath - Inverness 228: Rolling Farmland and Woodland 229: Enclosed Farmland 230: Interlocking Sweeping Peaks - Inverness 231: Upland Glen - Inverness 235: Broad Forested Strath 236: Smooth Moorland Ridges 	<ul style="list-style-type: none"> 237: Rocky Moorland - Lochaber 238: Rugged Massif - Lochaber 239: Interlocking Sweeping Peaks - Lochaber 284: Coastal Farmlands - Moray & Nairn 291: Open Rolling Upland 328: Rugged Mountain Massif - Ross & Cromarty 329: Rounded Mountain Massif 330: Rounded Hills and Moorland Slopes - Ross & Cromarty 331: Rounded Rocky Hills - Ross & Cromarty 333: Rocky Moorland and Rugged Hills 335: Wooded Glens and Rocky Moorland 339: Inland Strath 340: Strath - Ross & Cromarty 341: Forest Edge Farming 342: Farmed River Plains 343: Coastal Shelf 345: Farmed and Forested Slopes - Ross & Cromarty 346: Open Farmed Slopes 347: Open Steep Farmed Slopes 348: Cliffs and Rocky Coasts - Ross & Cromarty 357: Farmed and Settled Lowlands - Skye & Lochalsh 364: Rocky Moorland - Skye & Lochalsh 365: Rugged Massif - Skye & Lochalsh 369: Interlocking Sweeping Peaks - Skye & Lochalsh
---	--