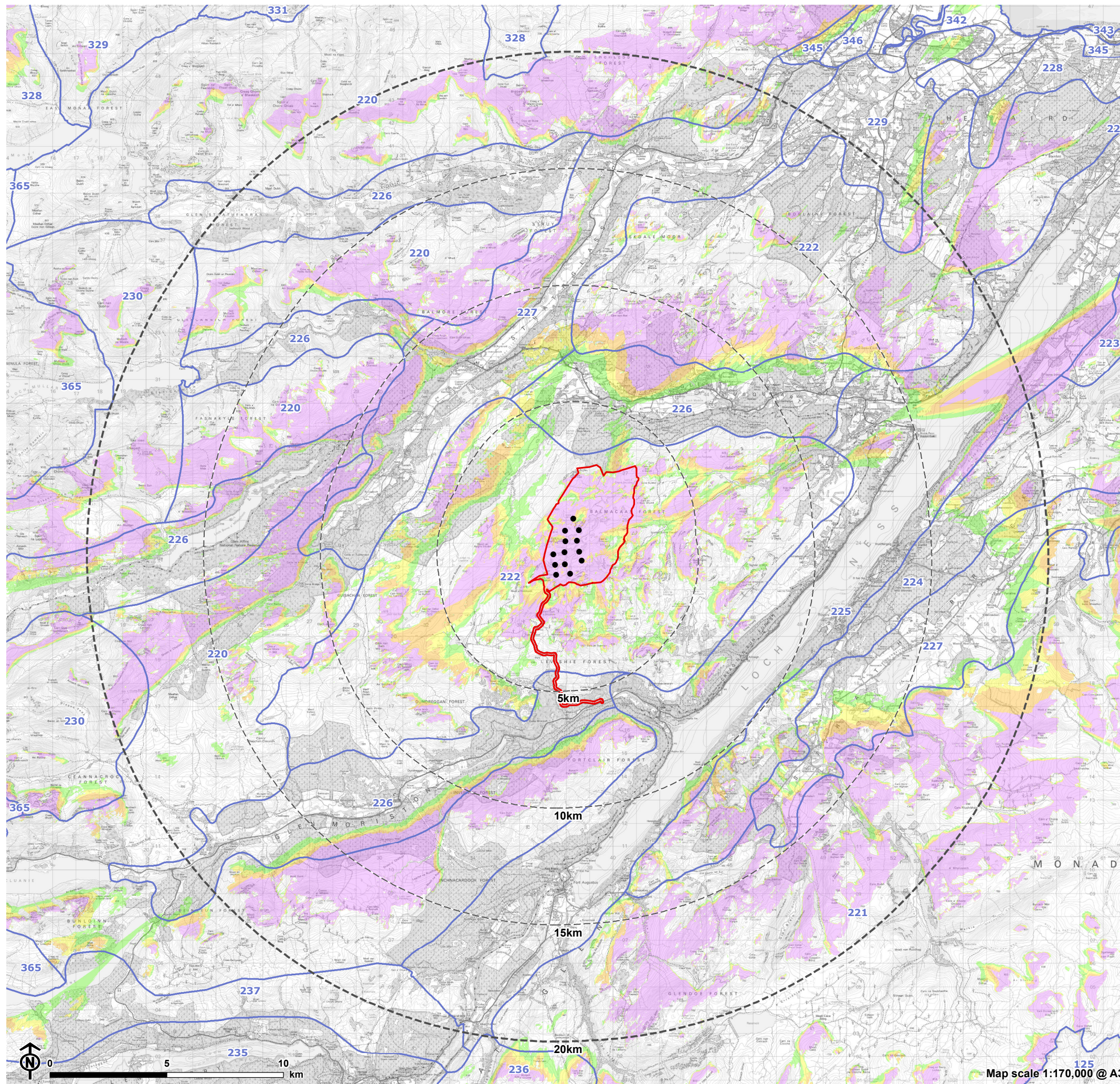


Figure 6.5b: Landscape Character Types with Blade Tip Height (180-200m) Zone of Theoretical Visibility (ZTV)



- Site boundary
 - Turbine
 - 5km intervals from outermost turbines
 - LVIA study area 20km from outermost turbines
- Theoretical turbine visibility**
- 1-4 turbines visible
 - 5-7 turbines visible
 - 8-10 turbines visible
 - 11-13 turbines visible
 - Landscape Character Types (NatureScot 2019)

- 125: Rolling Uplands - Cairngorms
- 220: Rugged Massif - Inverness
- 221: Rolling Uplands - Inverness
- 222: Rocky Moorland Plateau - Inverness
- 223: Flat Moorland Plateau with Woodland
- 224: Farmed and Wooded Foothills
- 225: Broad Steep-Sided Glen
- 226: Wooded Glen - Inverness
- 227: Farmed Strath - Inverness
- 228: Rolling Farmland and Woodland
- 229: Enclosed Farmland
- 230: Interlocking Sweeping Peaks - Inverness
- 235: Broad Forested Strath
- 236: Smooth Moorland Ridges
- 237: Rocky Moorland - Lochaber
- 328: Rugged Mountain Massif - Ross & Cromarty
- 329: Rounded Mountain Massif
- 331: Rounded Rocky Hills - Ross & Cromarty
- 342: Farmed River Plains
- 343: Coastal Shelf
- 345: Farmed and Forested Slopes - Ross & Cromarty
- 346: Open Farmed Slopes
- 365: Rugged Massif - Skye & Lochalsh

Notes:
The ZTV is calculated to turbine tip height (180-200m) from a viewing height of 2m above ground level. The terrain model assumes bare ground and is derived from OS Terrain 5 height data (obtained from Emapsite in November 2022). Earth curvature and atmospheric refraction have been taken into account. The ZTV was calculated using ArcMap 10.8.1 software.



Map scale 1:170,000 @ A3