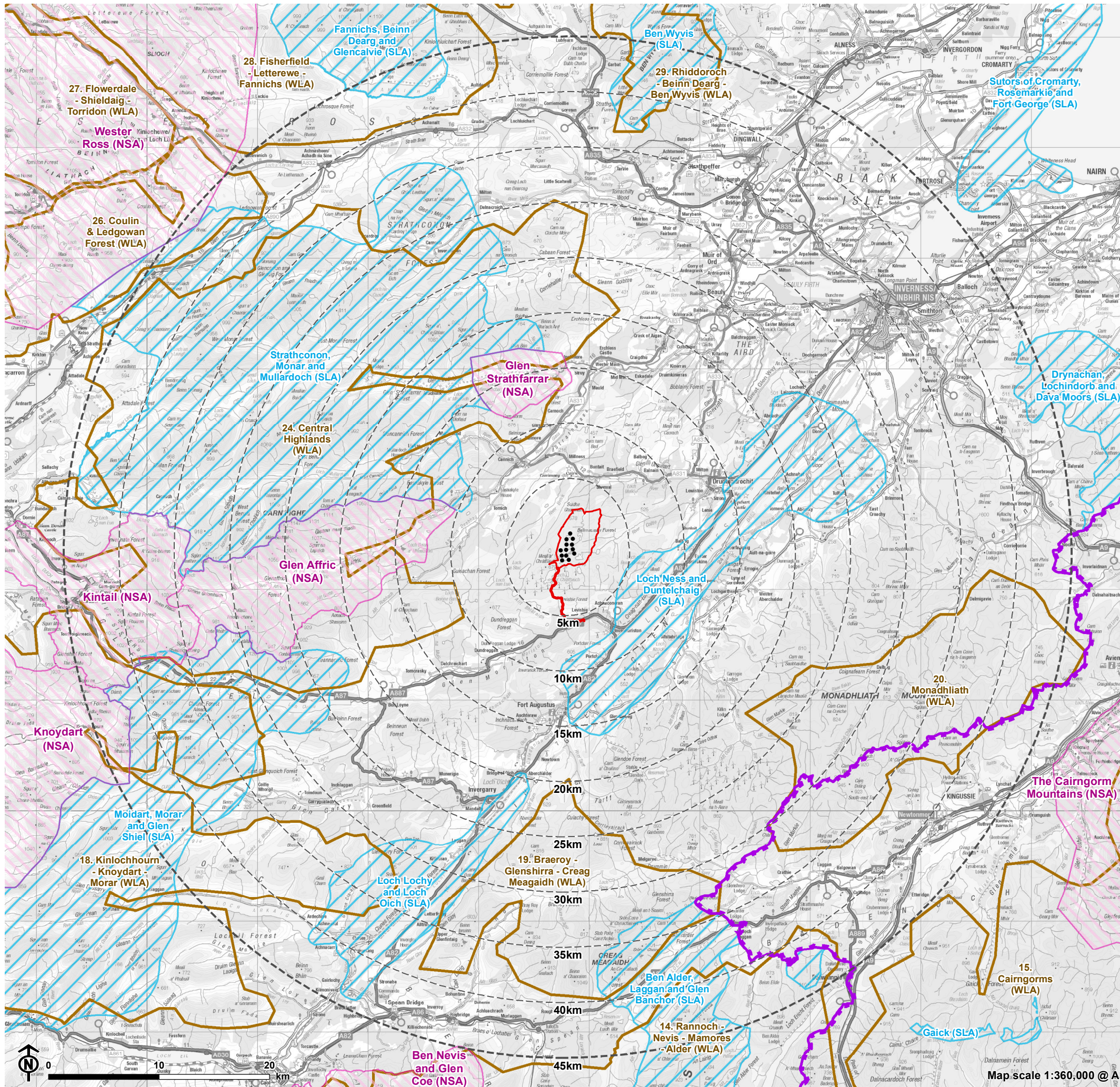


Figure 6.6a: Designated Landscapes & Wild Land Areas



- Site boundary
- Turbine
- 5km intervals from outermost turbines
- LVIA study area 45km from outermost turbines
- Cairngorms National Park
- National Scenic Area (NSA)
- Wild Land Area (WLA)
- Special Landscape Area (The Highland Council)