

Loch Liath Wind Farm
for Loch Liath Wind Farm Ltd

Figure: 6.23
VP10: Creag Dhubh

Site boundary

- Red outline

Turbine

- Colored dots

5km intervals from outermost turbines

- Dashed circles

LVIA study area 45km from outermost turbines

- Large dashed circle

Theoretical turbine visibility

- Green: 1-4 turbines visible
- Yellow: 5-7 turbines visible
- Orange: 8-10 turbines visible
- Purple: 11-13 turbines visible

Wind farm (by status)

- Blue dot: Operational
- Light blue dot: Under construction
- Purple dot: Consented
- Orange dot: Appeal/public inquiry
- Yellow dot: Application submitted
- Green dot: Design/scoping

Fields of View

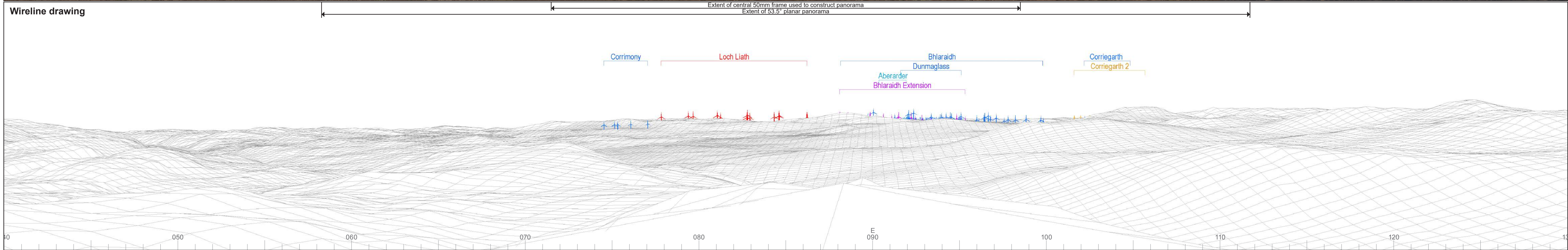
- Blue triangle: 53.5° field of view
- Black triangle: 90° field of view

Notes:

The ZTV is calculated to turbine tip height (180-200m) from a viewing height of 2m above ground level. The terrain model assumes bare ground and is derived from OS Terrain 5 height data (obtained from Emapsite in November 2022). Earth curvature and atmospheric refraction have been taken into account. The ZTV was calculated using ArcMap 10.8.1 software.

Statkraft

© Crown copyright and database rights. Ordnance Survey 0100031673. Source: Statkraft, LUC



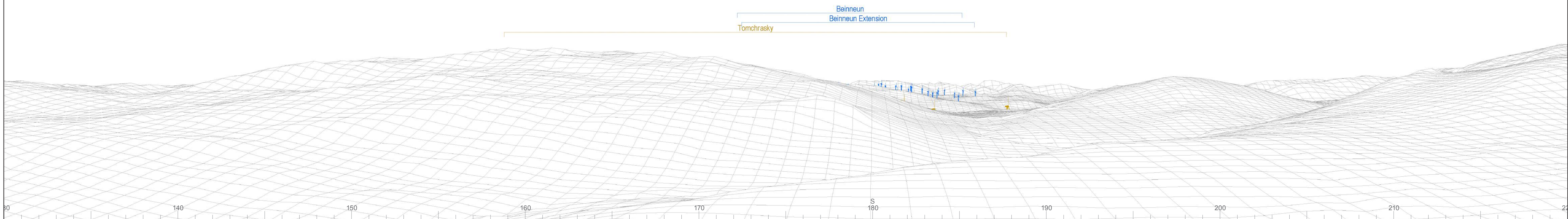
© Crown copyright and database rights 2023 Ordnance Survey data. Licence number: 0100031673



Baseline photograph

This image provides landscape and visual context only

Wireline drawing



© Crown copyright and database rights 2023 Ordnance Survey data. Licence number: 0100031673



OS reference: 222497E 821647N
 AOD: 535.43 m
 Direction of view: 175°
 Nearest turbine: 15.1 km

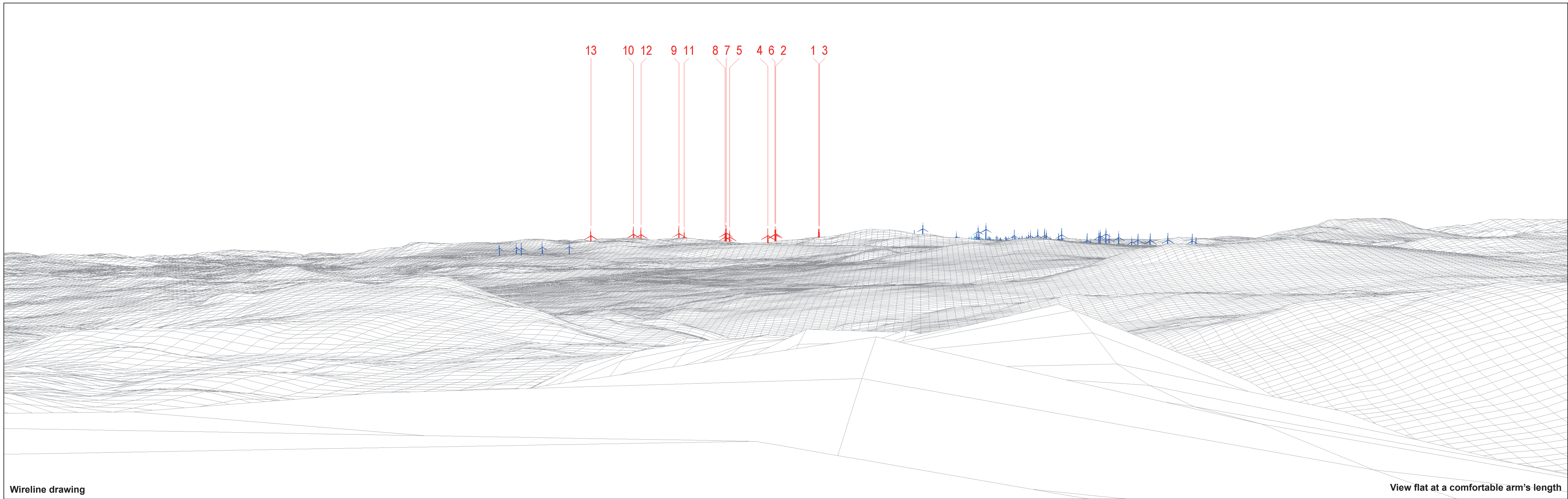
Horizontal field of view: 90° (cylindrical projection)
 Principal distance: 522 mm
 Paper size: 841 x 297 mm (half A1)
 Correct printed image size: 820 x 260 mm

Camera: Nikon D750
 Lens: 50mm Fixed Focal Length
 Camera height: 1.5 m

Photography Date: 07/03/2022
 Photography Time: 17:04:00

Wind Farm Developments key
 (by status):

Proposed scheme Application
 Operational Scoping
 Under construction Appeal/PLI
 Consented



Wireline drawing

View flat at a comfortable arm's length

© Crown copyright and database rights 2023 Ordnance Survey data. Licence number: 0100031673



OS reference: 222497E 821647N
 AOD: 535.43 m
 Direction of view: 85°
 Nearest turbine: 15.1 km

Horizontal field of view: 53.5° (planar projection)
 Principal distance: 812.5 mm
 Paper size: 841 x 297 mm (half A1)
 Correct printed image size: 820 x 260 mm

Wind Farm Developments key
 (by status):

Proposed scheme
 Operational

Loch Liath Wind Farm
Figure: 6.23c
Viewpoint 10: Creag Dhuhb



Photomontage

View flat at a comfortable arm's length



OS reference: 222497E 821647N
AOD: 535.43 m
Direction of view: 85°
Nearest turbine: 15.1 km

Horizontal field of view: 53.5° (planar projection)
Principal distance: 812.5 mm
Paper size: 841 x 297 mm (half A1)
Correct printed image size: 820 x 260 mm

Camera: Nikon D750
Lens: 50mm Fixed Focal Length
Camera height: 1.5 m

Photography Date: 07/03/2022
Photography Time: 17:04:00

Loch Liath Wind Farm
Figure: 6.23d
Viewpoint 10: Creag Dhubh



Dusk Photomontage – Maximum intensity aviation hub lighting shown on Turbines T1, T4, T7, T10, T12, T13

View flat at a comfortable arm's length



OS reference: 222497E 821647N
AOD: 535.43 m
Direction of view: 85°
Nearest turbine: 15.1 km

Horizontal field of view: 53.5° (planar projection)
Principal distance: 812.5 mm
Paper size: 841 x 297 mm (half A1)
Correct printed image size: 820 x 260 mm

Camera: Nikon D750
Lens: 50mm Fixed Focal Length
Camera height: 1.5 m

Photography Date: 07/03/2022
Photography Time: 19:29:00

Note: Nacelle lights shown in visualisation modelled to reflect individual candela values detailed in Appendix 6.5



Dusk Photomontage - Minimum intensity (10% of maximum candela) aviation hub lighting shown on Turbines T1, T4, T7, T10, T12, T13

View flat at a comfortable arm's length



OS reference: 222497E 821647N
AOD: 535.43 m
Direction of view: 85°
Nearest turbine: 15.1 km

Horizontal field of view: 53.5° (planar projection)
Principal distance: 812.5 mm
Paper size: 841 x 297 mm (half A1)
Correct printed image size: 820 x 260 mm

Camera: Nikon D750
Lens: 50mm Fixed Focal Length
Camera height: 1.5 m

Photography Date: 07/03/2022
Photography Time: 19:29:00

Note: Nacelle lights shown in visualisation modelled to reflect individual candela values detailed in Appendix 6.5



Dusk Photomontage – 2000 candela aviation hub lighting shown on Turbines T1, T4, T7, T10, T12, T13

View flat at a comfortable arm's length



OS reference: 222497E 821647N
AOD: 535.43 m
Direction of view: 85°
Nearest turbine: 15.1 km

Horizontal field of view: 53.5° (planar projection)
Principal distance: 812.5 mm
Paper size: 841 x 297 mm (half A1)
Correct printed image size: 820 x 260 mm

Camera: Nikon D750
Lens: 50mm Fixed Focal Length
Camera height: 1.5 m

Photography Date: 07/03/2022
Photography Time: 19:29:00

Note: Nacelle lights shown in visualisation modelled to 2000 candela value



Dusk Photomontage - 200 candela aviation hub lighting shown on Turbines T1, T4, T7, T10, T12, T13

View flat at a comfortable arm's length



OS reference: 222497E 821647N
AOD: 535.43 m
Direction of view: 85°
Nearest turbine: 15.1 km

Horizontal field of view: 53.5° (planar projection)
Principal distance: 812.5 mm
Paper size: 841 x 297 mm (half A1)
Correct printed image size: 820 x 260 mm

Camera: Nikon D750
Lens: 50mm Fixed Focal Length
Camera height: 1.5 m

Photography Date: 07/03/2022
Photography Time: 19:29:00

Note: Nacelle lights shown in visualisation modelled to 200 candela value