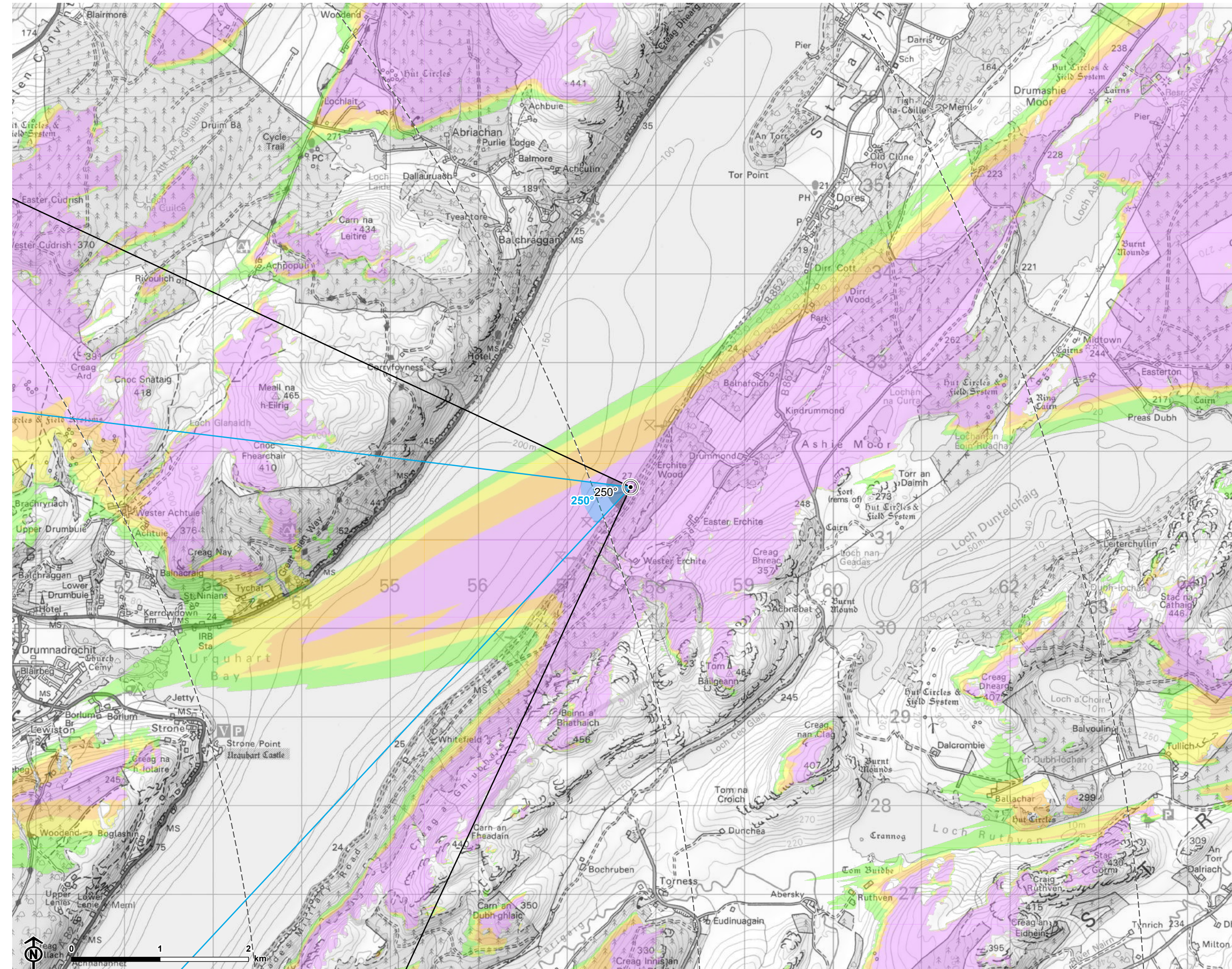


Contains Ordnance Survey data © Crown copyright and database right



© Crown copyright and database rights Ordnance Survey 0100031673

Loch Liath Wind Farm
for Loch Liath Wind Farm Ltd



Figure: 6.26
VP13: B852 Erchite Wood east of Loch Ness picnic area

- Site boundary
- Turbine
- 5km intervals from outermost turbines
- LVA study area 45km from outermost turbines
- Theoretical turbine visibility**
 - 1-4 turbines visible
 - 5-7 turbines visible
 - 8-10 turbines visible
 - 11-13 turbines visible
- Wind farm (by status)**
 - Operational
 - Under construction
 - Consented
 - Appeal/public inquiry
 - Application submitted
 - Design/scoping
- 53.5° field of view
- 90° field of view

Notes:
The ZTV is calculated to turbine tip height (180-200m) from a viewing height of 2m above ground level. The terrain model assumes bare ground and is derived from OS Terrain 5 height data (obtained from Emapsite in November 2022). Earth curvature and atmospheric refraction have been taken into account. The ZTV was calculated using ArcMap 10.8.1 software.

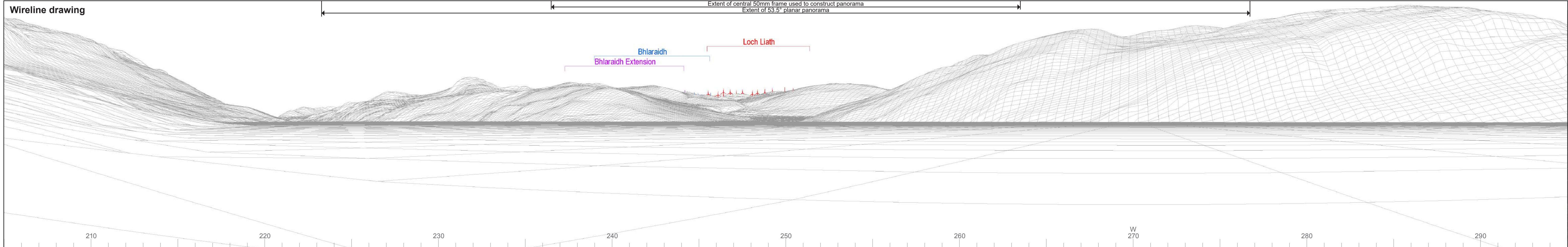


CB: EB:wingfield_h_LUC 11057 Loch Liath LVA 21/03/2023
Source: Statkraft, LUC



Baseline photograph

This image provides landscape and visual context only



Wireline drawing

Extent of central 50mm frame used to construct panorama
Extent of 53.5° planar panorama

Bhlaraidh
Bhlaraidh Extension

Loch Liath

210 220 230 240 250 260 W 270 280 290



OS reference: 257717E 831590N
AOD: 17.31 m
Direction of view: 250°
Nearest turbine: 20.4 km

Horizontal field of view: 90° (cylindrical projection)
Principal distance: 522 mm
Paper size: 841 x 297 mm (half A1)
Correct printed image size: 820 x 260 mm

Camera: Nikon D750
Lens: 50mm Fixed Focal Length
Camera height: 1.5 m

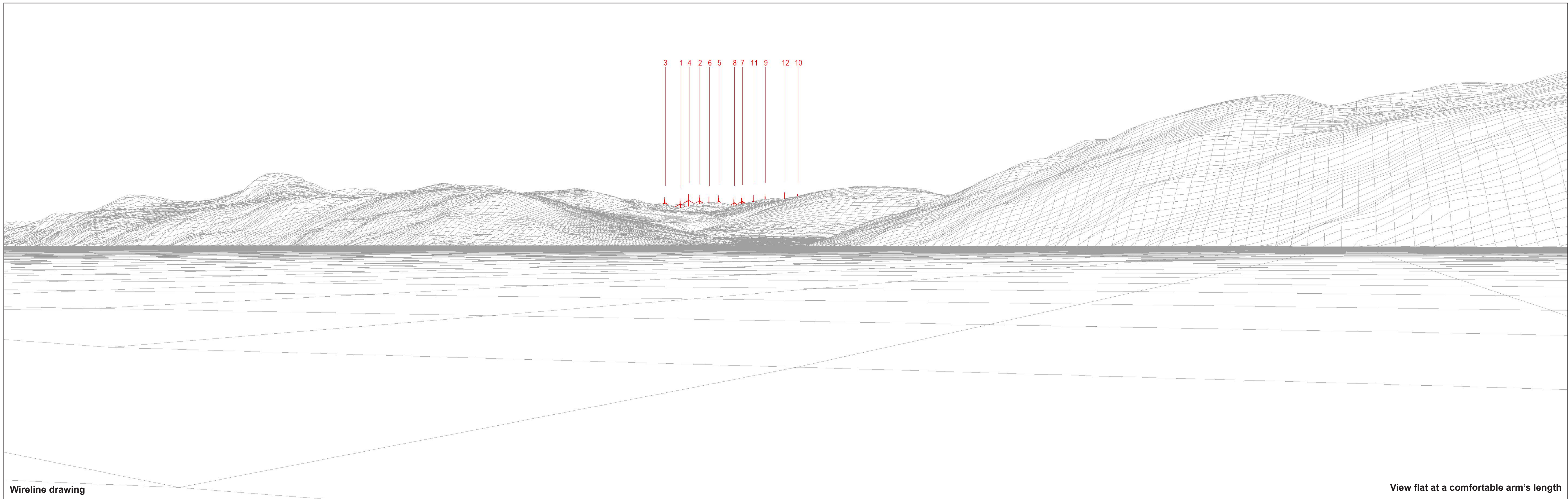
Photography Date: 15/04/2021
Photography Time: 09:55:00

Wind Farm Developments key
(by status):

Proposed scheme Application
Operational Scoping
Under construction Appeal/PLI
Consented

Loch Liath Wind Farm
Figure: 6.26a

Viewpoint 13: B852 Erchite Wood east of Loch Ness picnic area



Wireline drawing

View flat at a comfortable arm's length

© Crown copyright and database rights 2023 Ordnance Survey data. Licence number: 0100031673



OS reference: 257717E 831590N
 AOD: 17.31 m
 Direction of view: 250°
 Nearest turbine: 20.4 km

Horizontal field of view: 53.5° (planar projection)
 Principal distance: 812.5 mm
 Paper size: 841 x 297 mm (half A1)
 Correct printed image size: 820 x 260 mm

Wind Farm Developments key
 (by status):

Proposed scheme
 Operational

Viewpoint 13: B852 Erchite Wood east of Loch Ness picnic area



Photomontage

View flat at a comfortable arm's length



OS reference: 257717E 831590N
AOD: 17.31 m
Direction of view: 250°
Nearest turbine: 20.4 km

Horizontal field of view: 53.5° (planar projection)
Principal distance: 812.5 mm
Paper size: 841 x 297 mm (half A1)
Correct printed image size: 820 x 260 mm

Camera: Nikon D750
Lens: 50mm Fixed Focal Length
Camera height: 1.5 m

Photography Date: 15/04/2021
Photography Time: 09:55:00

Loch Liath Wind Farm
Figure: 6.26c
Viewpoint 13: B852 Erchite Wood east of Loch Ness picnic area