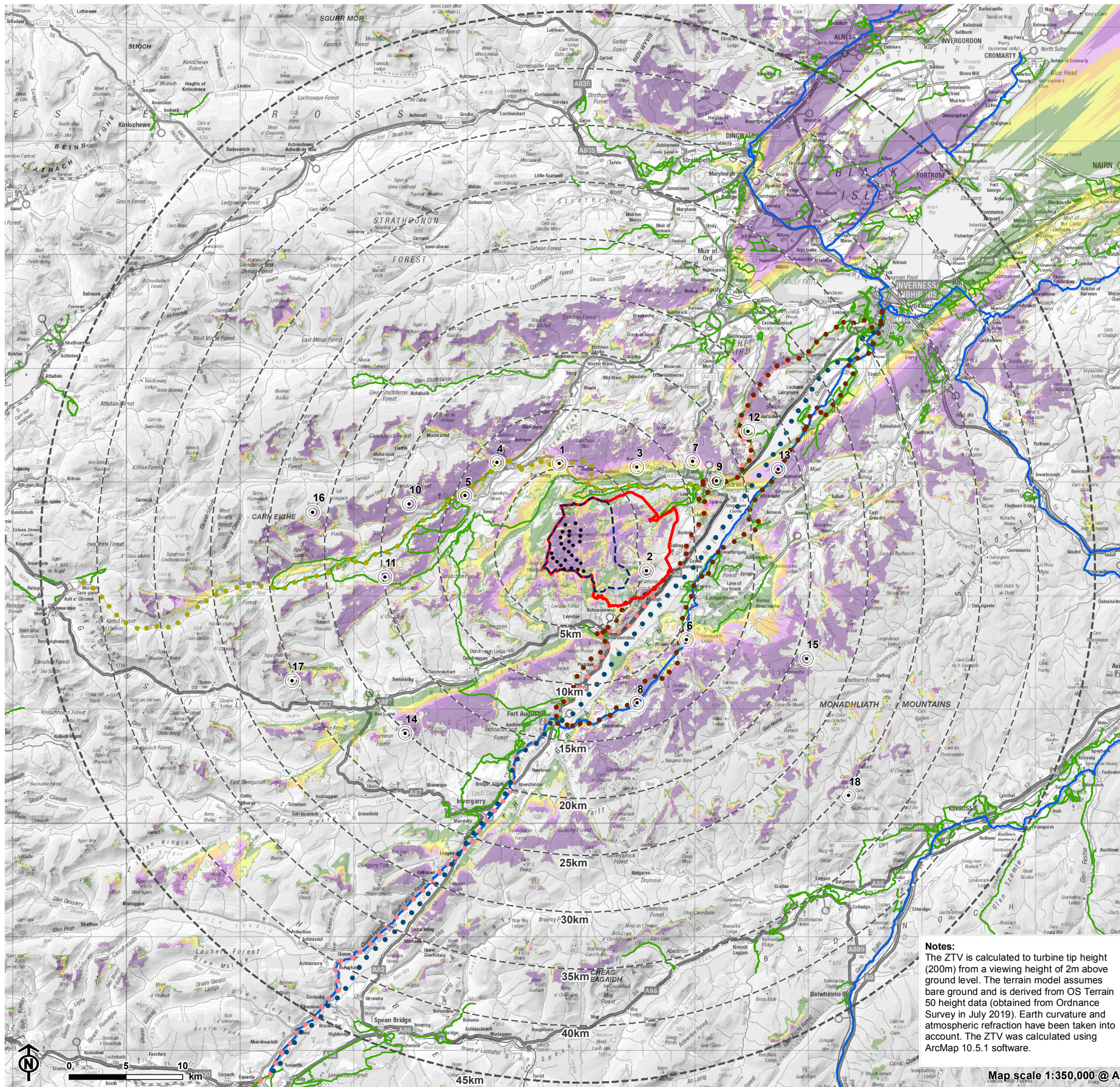


Figure 5.2: Blade Tip Height ZTV (200m) & Visual Receptors



- Turbine
- ▭ Site boundary
- ▭ Developable area
- ▭ 5km intervals from outermost turbines
- ▭ LVIA study area 45km from outermost turbines

Theoretical turbine visibility

- ▭ 1-5 turbines visible
- ▭ 6-10 turbines visible
- ▭ 11-14 turbines visible
- ▭ 15-18 turbines visible
- ▭ 19-22 turbines visible
- ▭ 23-26 turbines visible

Recreational routes

- ▬ National Cycle Network (NCN)
- Loch Ness 360
- Affric Kintail Way (indicative realignment)
- Great Glen Canoe Trail
- Great Glen Way
- ▬ Core Paths

- Viewpoint
- 1. A831/Affric-Kintail Way near Miless
- 2. Meall Fuar-mhonaidh
- 3. Balbeg
- 4. Affric Kintail Way West of Cannich
- 5. Glen Affric, Approach to Badger Fall
- 6. B862 near Whitebridge
- 7. A833 near Balnagrantach
- 8. B862 Suidhe Viewpoint
- 9. A82/Great Glen Way, Urquhart Bay
- 10. Meall Mor, above Glen Affric
- 11. Creag Dhubb
- 12. Carn na Leitire
- 13. B852 Erchite Wood, east of Loch Ness (picnic area)
- 14. Meall Dubh
- 15. Carn na Saobhaidhe
- 16. Tom a Choinnich
- 17. Carn Ghluasaid
- 18. Carn Dearg

Notes:
The ZTV is calculated to turbine tip height (200m) from a viewing height of 2m above ground level. The terrain model assumes bare ground and is derived from OS Terrain 50 height data (obtained from Ordnance Survey in July 2019). Earth curvature and atmospheric refraction have been taken into account. The ZTV was calculated using ArcMap 10.5.1 software.

Map scale 1:350,000 @ A3