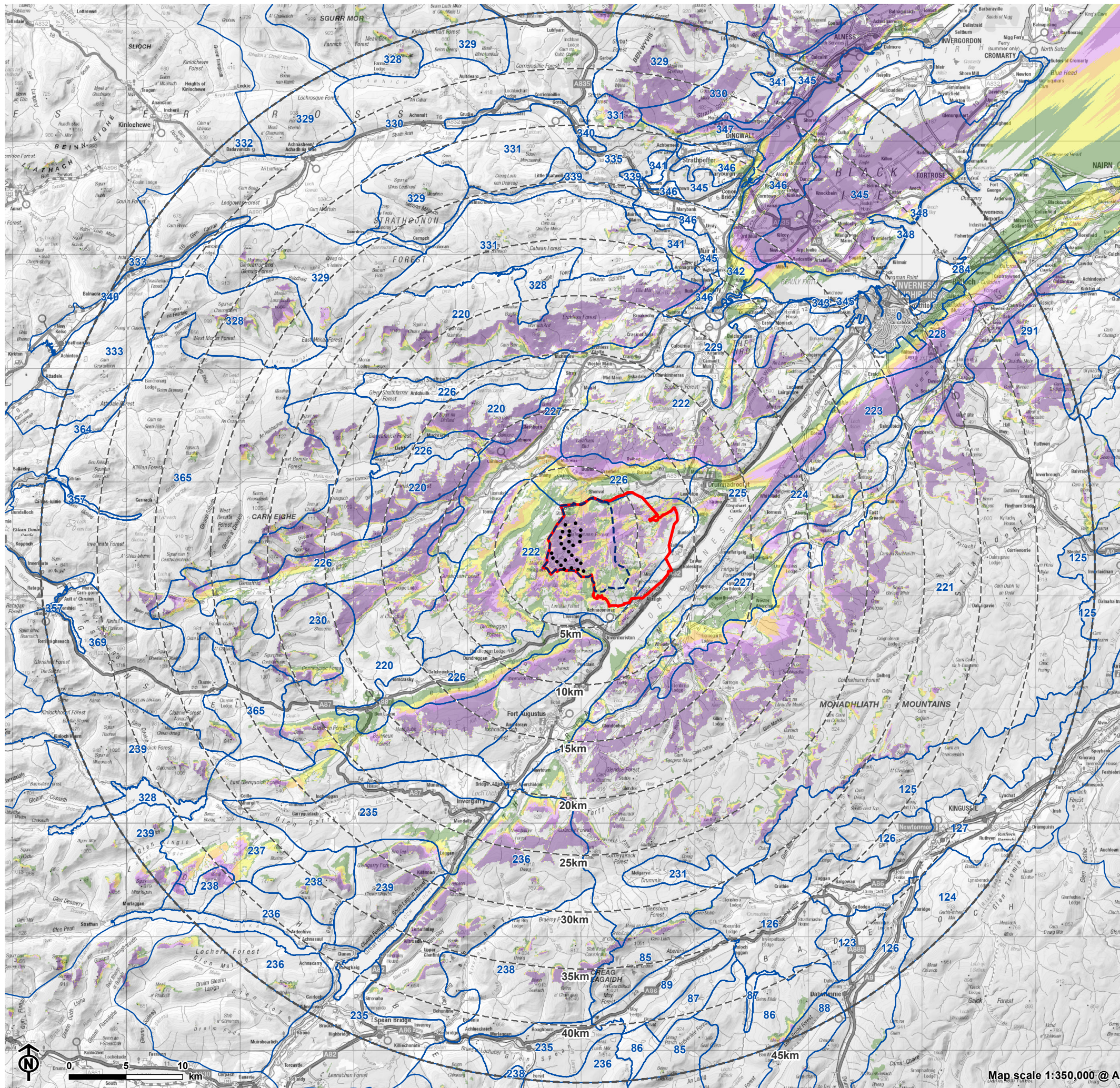


Figure 5.4: Blade Tip Height ZTV (200m) & Landscape Character Types (LCTs)



- Turbine
 - ▭ Site boundary
 - ▭ Developable area
 - ▭ 5km intervals from outermost turbines
 - ▭ LVIA study area 45km from outermost turbines
- Theoretical turbine visibility**
- ▭ 1-5 turbines visible
 - ▭ 6-10 turbines visible
 - ▭ 11-14 turbines visible
 - ▭ 15-18 turbines visible
 - ▭ 19-22 turbines visible
 - ▭ 23-26 turbines visible
- ▭ Landscape Character Types (SNH 2019)
- | | |
|--|--|
| 0. Urban | 284. Coastal Farmlands - Moray & Nairn |
| 85. Isolated Mountain Plateau | 291. Open Rolling Upland |
| 86. Smooth Rounded Hills - Badenoch & Strathspey | 294. Upland Valleys - Moray & Nairn |
| 87. Small Craggy Knolls and Hills | 328. Rugged Mountain Massif - Ross & Cromarty |
| 88. Loch and Glen | 329. Rounded Mountain Massif |
| 89. Broad Loch and Glen | 330. Rounded Hills and Moorland Slopes - Ross & Cromarty |
| 123. Smooth Rounded Hills - Cairngorms | 331. Rounded Rocky Hills - Ross & Cromarty |
| 124. Summits and Plateaux - Cairngorms | 332. High Rocky Moorland and Plateau - Ross & Cromarty |
| 125. Rolling Uplands - Cairngorms | 333. Rocky Moorland and Rugged Hills |
| 126. Upland Glen - Cairngorms | 335. Wooded Glens and Rocky Moorland |
| 127. Upland Strath | 339. Inland Strath |
| 220. Rugged Massif - Inverness | 340. Strath - Ross & Cromarty |
| 221. Rolling Uplands - Inverness | 341. Forest Edge Farming |
| 222. Rocky Moorland Plateau - Inverness | 342. Farmed River Plains |
| 223. Flat Moorland Plateau with Woodland | 343. Coastal Shelf |
| 224. Farmed and Wooded Foothills | 345. Farmed and Forested Slopes - Ross & Cromarty |
| 225. Broad Steep-Sided Glen | 346. Open Farmed Slopes |
| 226. Wooded Glen - Inverness | 347. Open Steep Farmed Slopes |
| 227. Farmed Strath - Inverness | 348. Cliffs and Rocky Coasts - Ross & Cromarty |
| 228. Rolling Farmland and Woodland | 357. Farmed and Settled Lowlands - Skye & Lochalsh |
| 229. Enclosed Farmland | 364. Rocky Moorland - Skye & Lochalsh |
| 230. Interlocking Sweeping Peaks - Inverness | 365. Rugged Massif - Skye & Lochalsh |
| 231. Upland Glen - Inverness | 369. Interlocking Sweeping Peaks - Skye & Lochalsh |
| 235. Broad Forested Strath | |
| 236. Smooth Moorland Ridges | |
| 237. Rocky Moorland - Lochaber | |
| 238. Rugged Massif - Lochaber | |
| 239. Interlocking Sweeping Peaks - Lochaber | |

Notes:
The ZTV is calculated to turbine tip height (200m) from a viewing height of 2m above ground level. The terrain model assumes bare ground and is derived from OS Terrain 50 height data (obtained from Ordnance Survey in July 2019). Earth curvature and atmospheric refraction have been taken into account. The ZTV was calculated using ArcMap 10.5.1 software.