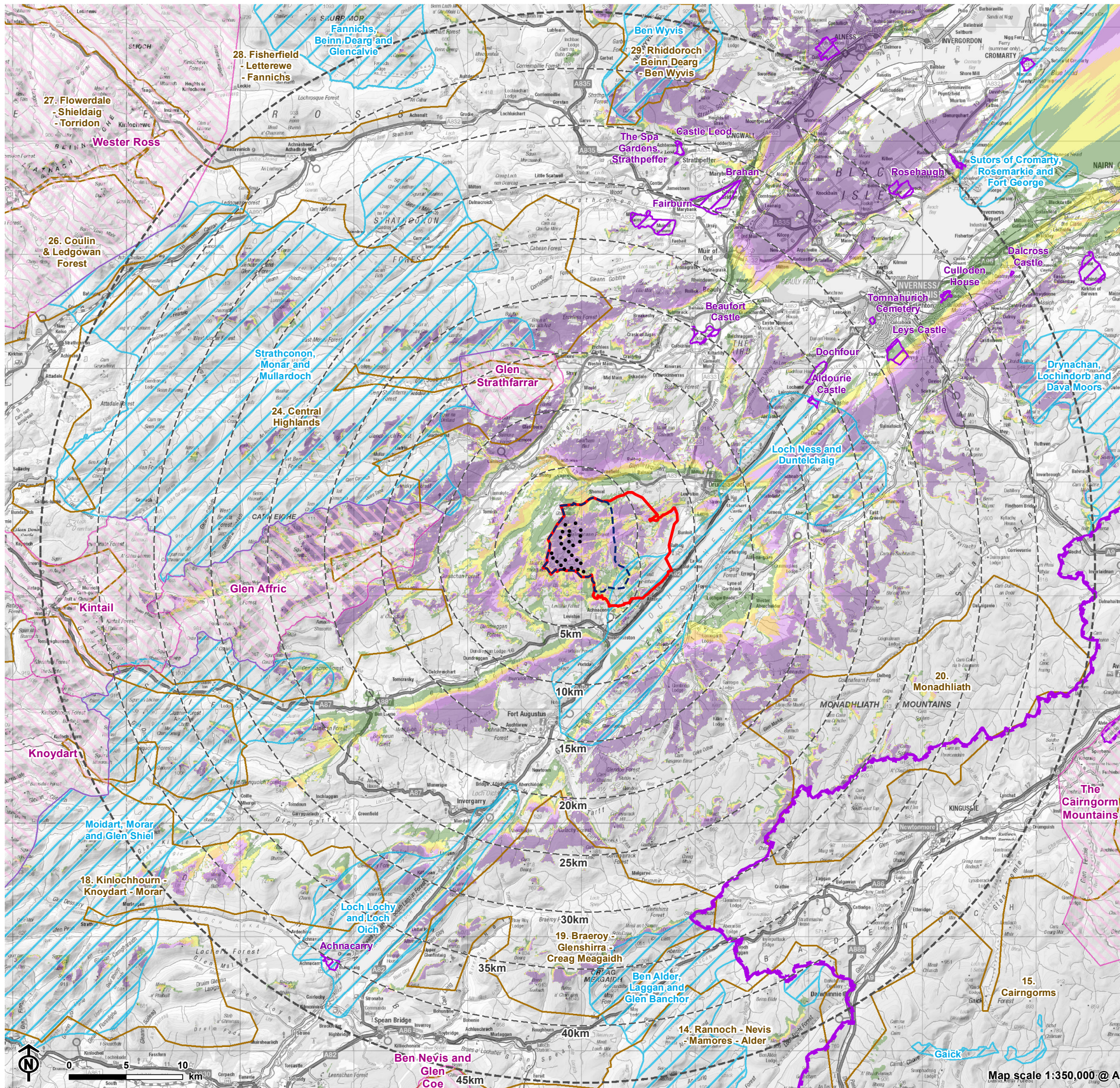


Figure 5.5: Blade Tip Height ZTV (200m), Designated Landscapes & Wild Land



- Turbine
 - ▭ Site boundary
 - ▭ Developable area
 - ▭ 5km intervals from outermost turbines
 - ▭ LVIA study area 45km from outermost turbines
- Theoretical turbine visibility**
- ▭ 1-5 turbines visible
 - ▭ 6-10 turbines visible
 - ▭ 11-14 turbines visible
 - ▭ 15-18 turbines visible
 - ▭ 19-22 turbines visible
 - ▭ 23-26 turbines visible
- Landscape Designations**
- ▭ Cairngorms National Park
 - ▭ National Scenic Area (NSA)
 - ▭ Garden and Designed Landscape (GDL)
 - ▭ Wild Land Area
 - ▭ Special Landscape Area (The Highland Council)

Notes:
The ZTV is calculated to turbine tip height (200m) from a viewing height of 2m above ground level. The terrain model assumes bare ground and is derived from OS Terrain 50 height data (obtained from Ordnance Survey in July 2019). Earth curvature and atmospheric refraction have been taken into account. The ZTV was calculated using ArcMap 10.5.1 software.