



# OLIVER FOREST WIND FARM

## VIEWPOINTS

---

28 February - 22 March 2024

# Viewpoints

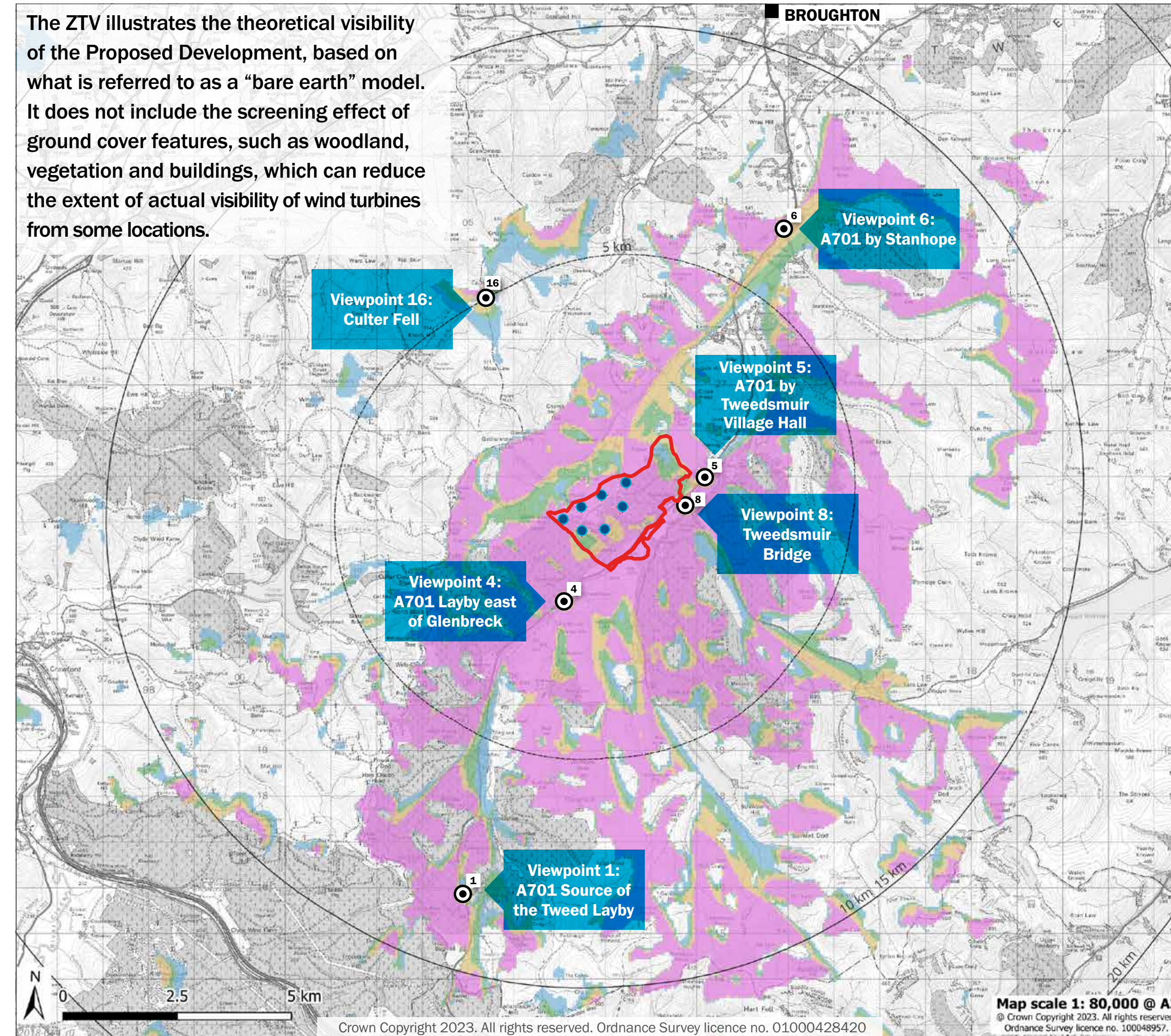
Six visualisations from local viewpoints have been provided to demonstrate how the proposed wind farm could look based on the revised proposal of up to 7 turbines up to 200m to blade tip height. These illustrations provide a good representation of the current plans from several local viewpoints.\*

Representative viewpoint locations have been agreed with Scottish Borders Council, Dumfries and Galloway Council, South Lanarkshire Council and NatureScot to ensure the most suitable locations are selected to illustrate any visual effects of the wind farm. As the turbines are over 150m to tip height and will require aviation lighting, night time viewpoint locations have also been agreed.

A full set of visualisations for each agreed viewpoint, which includes a baseline photo, a wireline and a photomontage of how the wind farm may look, will be provided as part of the Environmental Impact Assessment Report (EIA Report) submitted as part of the application for the wind farm.

\* Several visualisations presented show the proposed wind farm during snowy conditions. For the EIAR, photographs will be taken during clear weather conditions as per requirements.

# Zone of Theoretical Visibility (ZTV)



**Key**

- Site Boundary
- Proposed Turbine – 200m tip
- 5km buffer intervals from the Site boundary

**No. of Turbines Theoretically Visible**

- 1 - 2 tips visible
- 3 - 4 tips visible
- 5 - 6 tips visible
- 7 tips visible

**⊙ Predicted Viewpoint Location**

- 1 A701 Source of the Tweed Layby
- 4 A701 Layby east of Glenbreck
- 5 A701 by Tweedsmuir Village Hall
- 6 A701 by Stanhope
- 8 Tweedsmuir Bridge
- 16 Culter Fell

# Viewpoint 1: A701 Source of the Tweed Layby

---

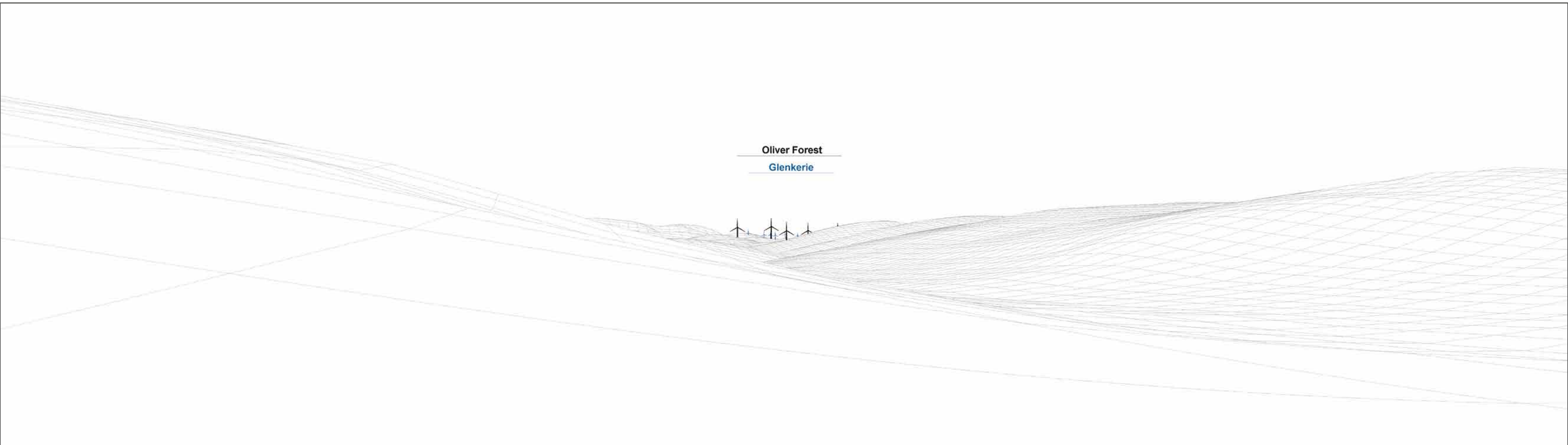
## CURRENT VIEW



Photograph showing current view.

# Viewpoint 1: A701 Source of the Tweed Layby

## WIREFRAME



Wireframe showing current proposed layout.  
Based on current proposal of 7 turbines at 200m  
to blade tip height.

# Viewpoint 1: A701 Source of the Tweed Layby

PREDICTED VIEW



Photomontage showing current proposed layout.  
Based on current proposal of 7 turbines at 200m  
to blade tip height.

# Viewpoint 4: A701 Layby east of Glenbreck

---

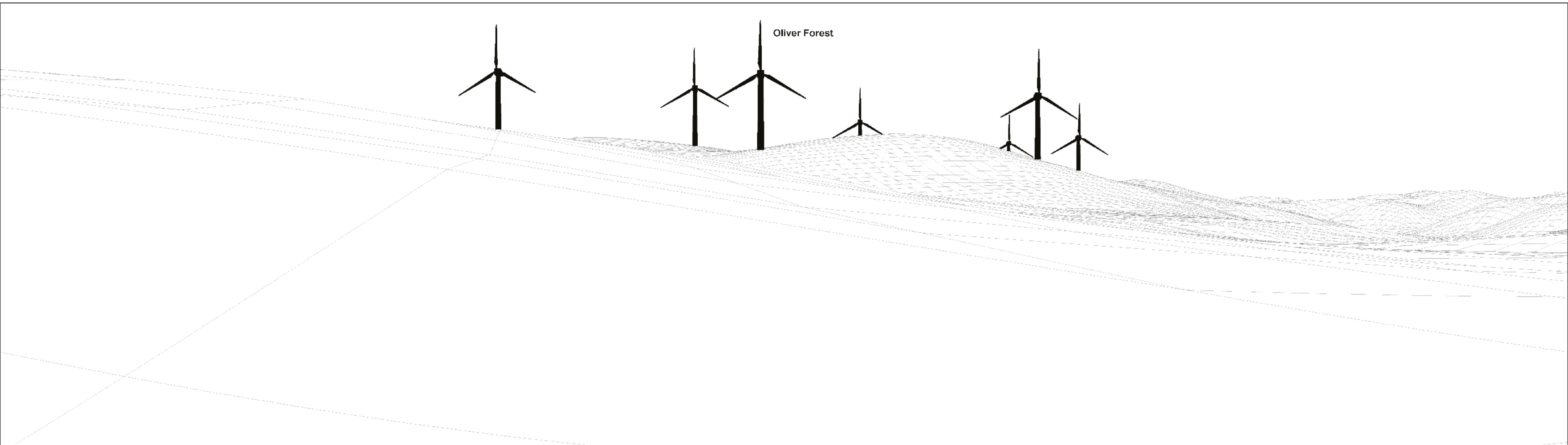
## CURRENT VIEW



Photograph showing current view.

# Viewpoint 4: A701 Layby east of Glenbreck

## WIREFRAME



Wireframe showing current proposed layout.  
Based on current proposal of 7 turbines at 200m  
to blade tip height.

## Viewpoint 4: A701 Layby east of Glenbreck

PREDICTED VIEW

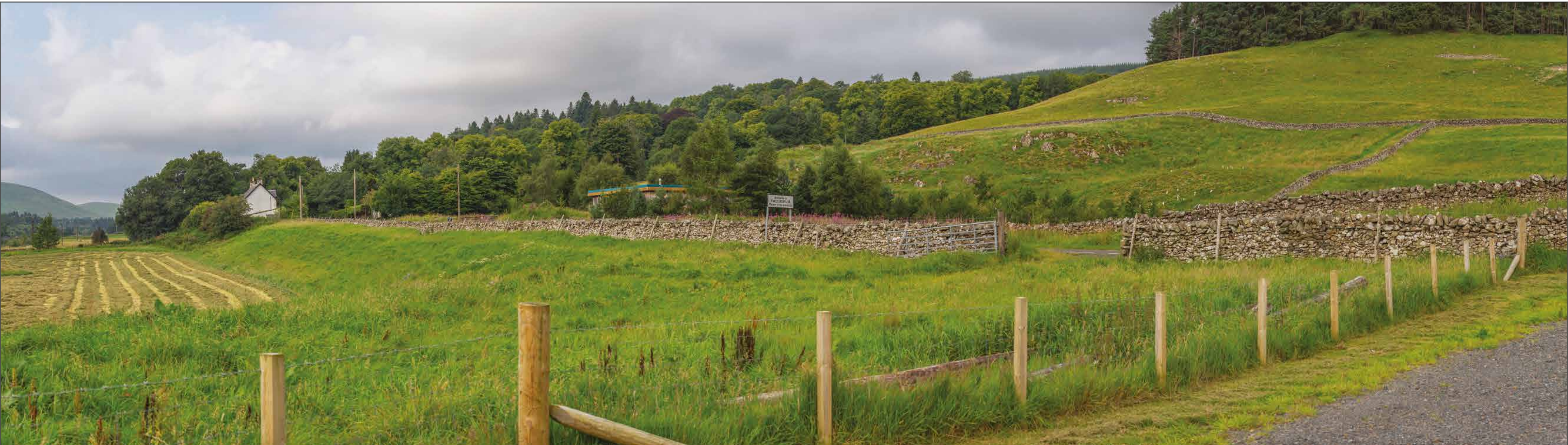


Photomontage showing current proposed layout.  
Based on current proposal of 7 turbines at 200m  
to blade tip height.



# Viewpoint 5: A701 by Tweedsmuir Village Hall

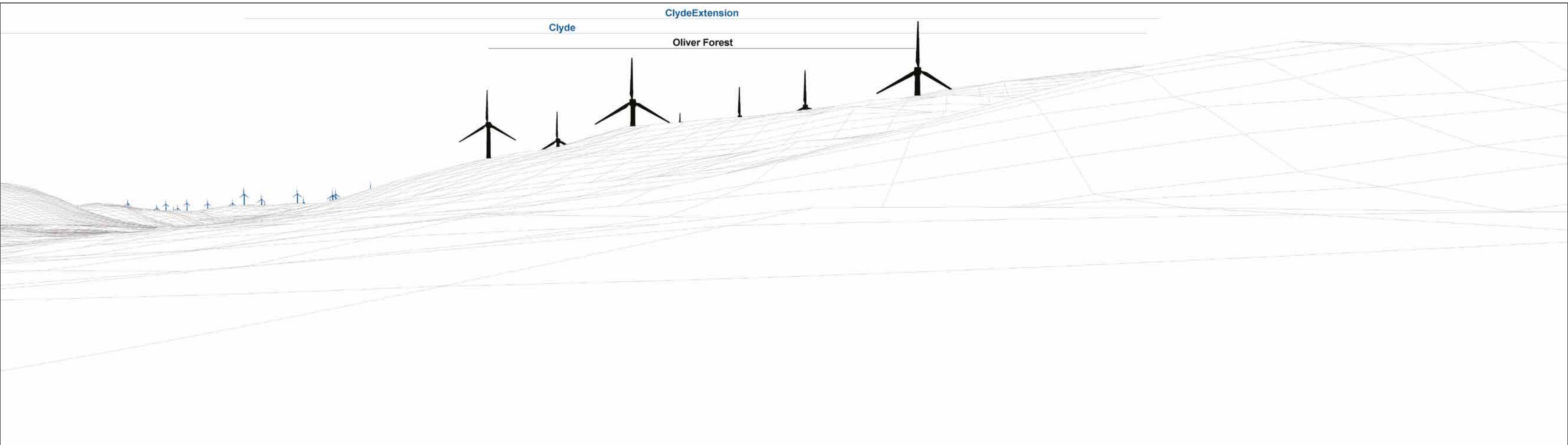
## CURRENT VIEW



Photograph showing current view

# Viewpoint 5: A701 by Tweedsmuir Village Hall

## WIREFRAME



Wireframe showing current proposed layout.  
Based on current proposal of 7 turbines at 200m  
to blade tip height.

# Viewpoint 5: A701 by Tweedsmuir Village Hall

## PREDICTED VIEW



Photomontage showing current proposed layout.  
Based on current proposal of 7 turbines at 200m  
to blade tip height.

## Viewpoint 6: A701 by Stanhope

---

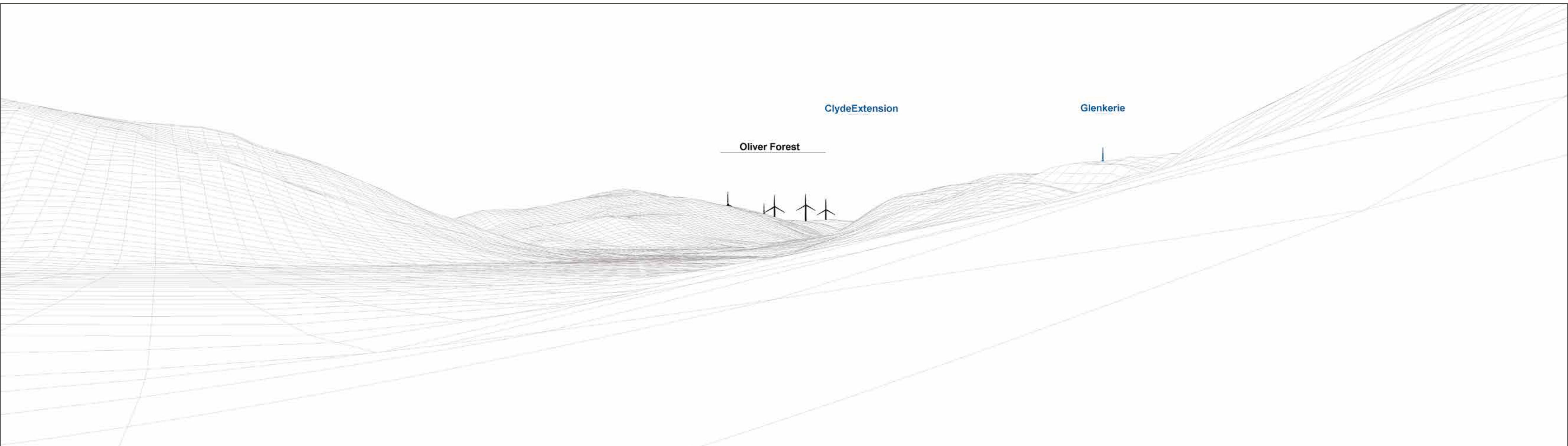
### CURRENT VIEW



Photograph showing current view

# Viewpoint 6: A701 by Stanhope

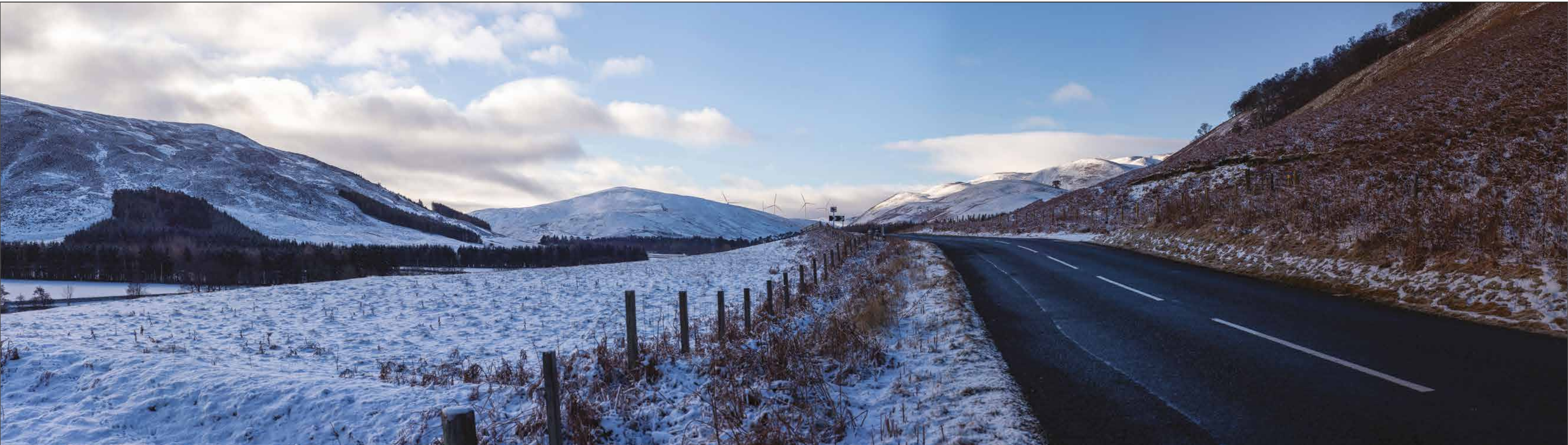
## WIREFRAME



Wireframe showing current proposed layout.  
Based on current proposal of 7 turbines at 200m  
to blade tip height.

## Viewpoint 6: A701 by Stanhope

### PREDICTED VIEW



Photomontage showing current proposed layout.  
Based on current proposal of 7 turbines at 200m  
to blade tip height.

# Viewpoint 8: Tweedsmuir Bridge

---

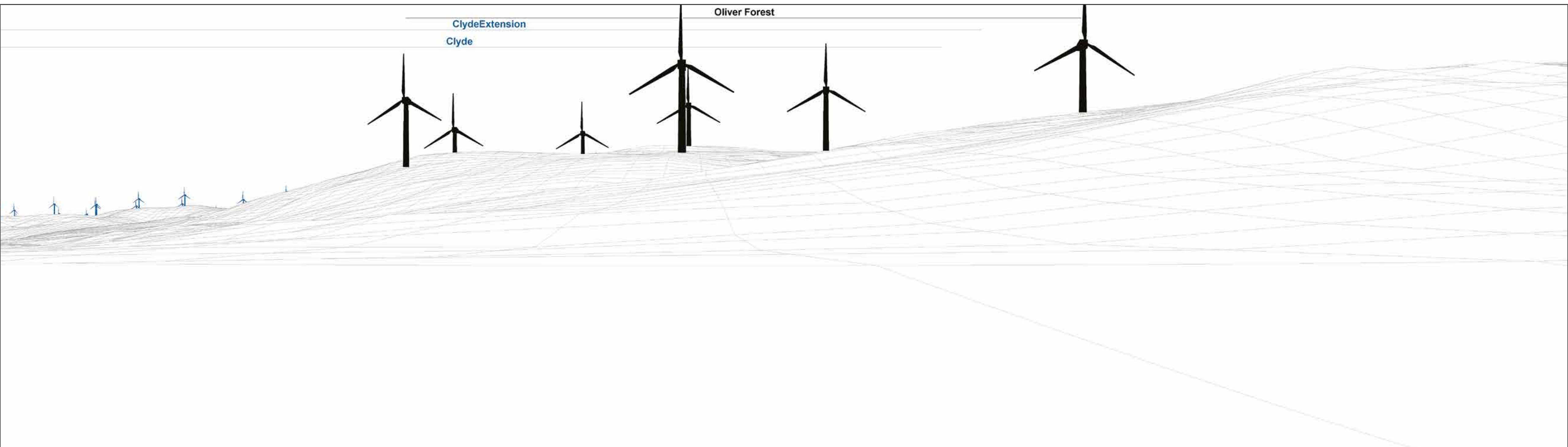
## CURRENT VIEW



Photograph showing current view.

# Viewpoint 8: Tweedsmuir Bridge

## WIREFRAME



Wireframe showing current proposed layout.  
Based on current proposal of 7 turbines at 200m  
to blade tip height.



# Viewpoint 8: Tweedsmuir Bridge

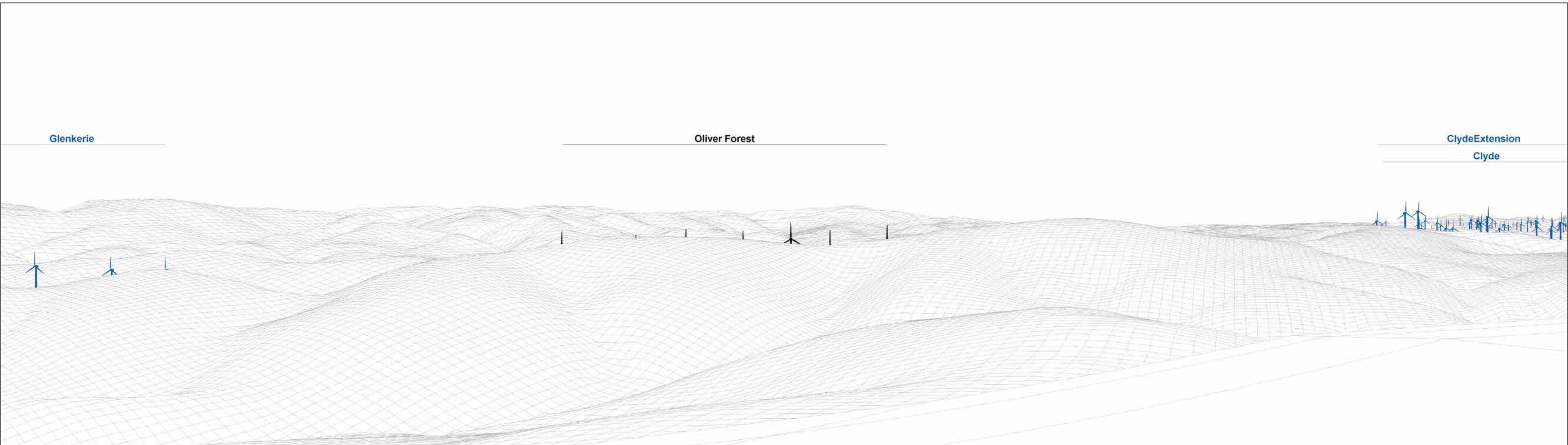
PREDICTED VIEW



Photomontage showing current proposed layout.  
Based on current proposal of 7 turbines at 200m  
to blade tip height.

# Viewpoint 16: Culter Fell

WIREFRAME\*



Wireframe showing current proposed layout.  
Based on current proposal of 7 turbines at 200m  
to blade tip height.

\* Only a wireframe is available from this viewpoint as weather conditions  
prevented photographs to be taken safely in time for the meeting.  
A full set of visuals will be available for submission of any future application.

[Return to the Virtual Exhibition](#)