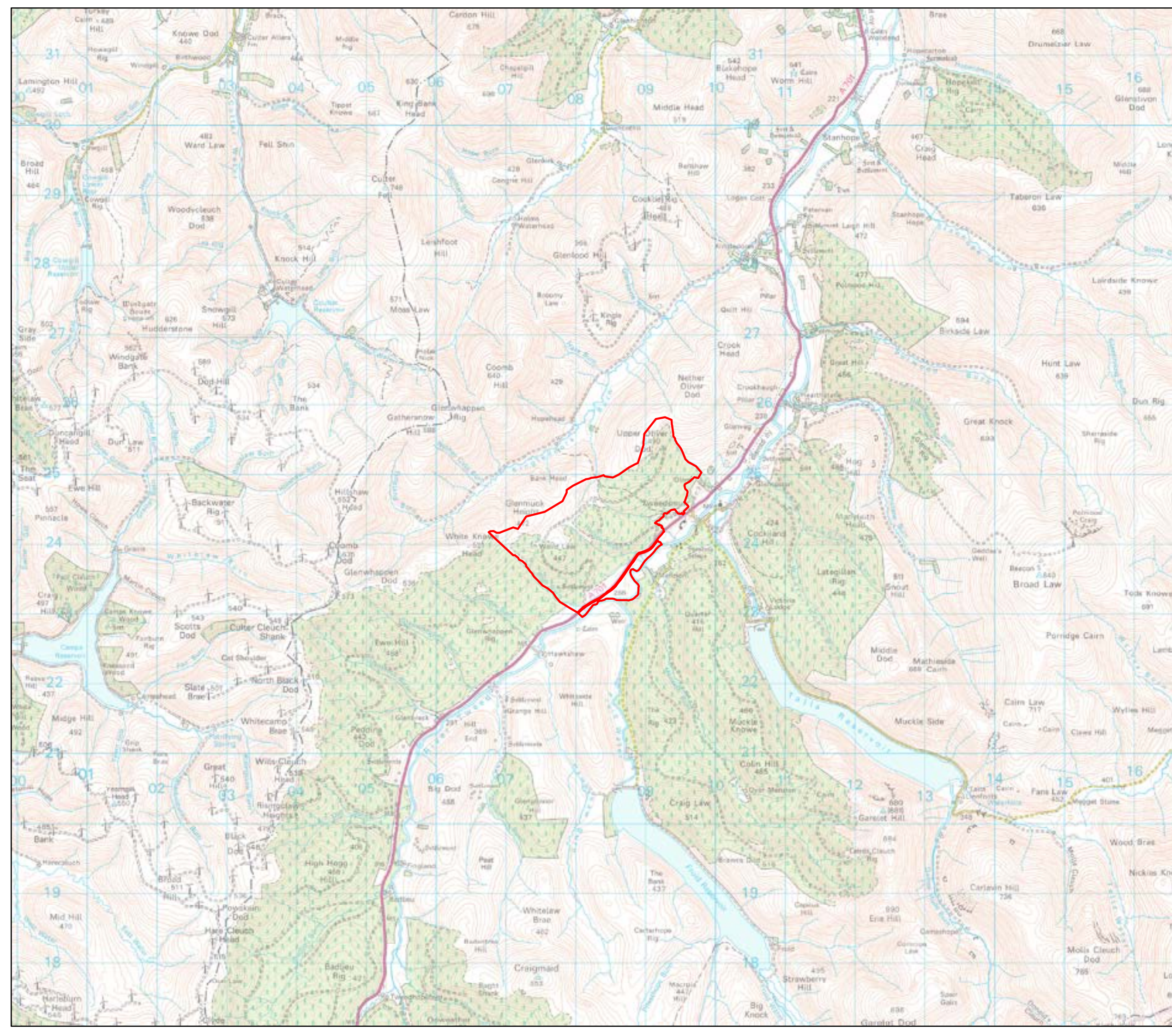


Legend

 Site Boundary



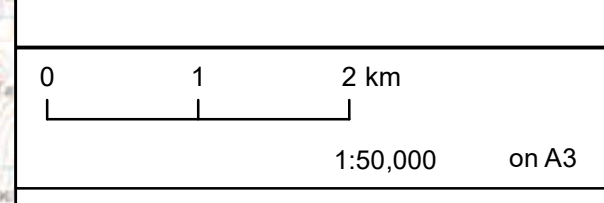
Page Centre: 308,275 624,389	Revision No: 2
---------------------------------	-------------------

Drawn By: JO	Checked By: JK	Date: 11/23/2022
-----------------	-------------------	---------------------

Oliver Forest Wind Farm

EIA Scoping Report

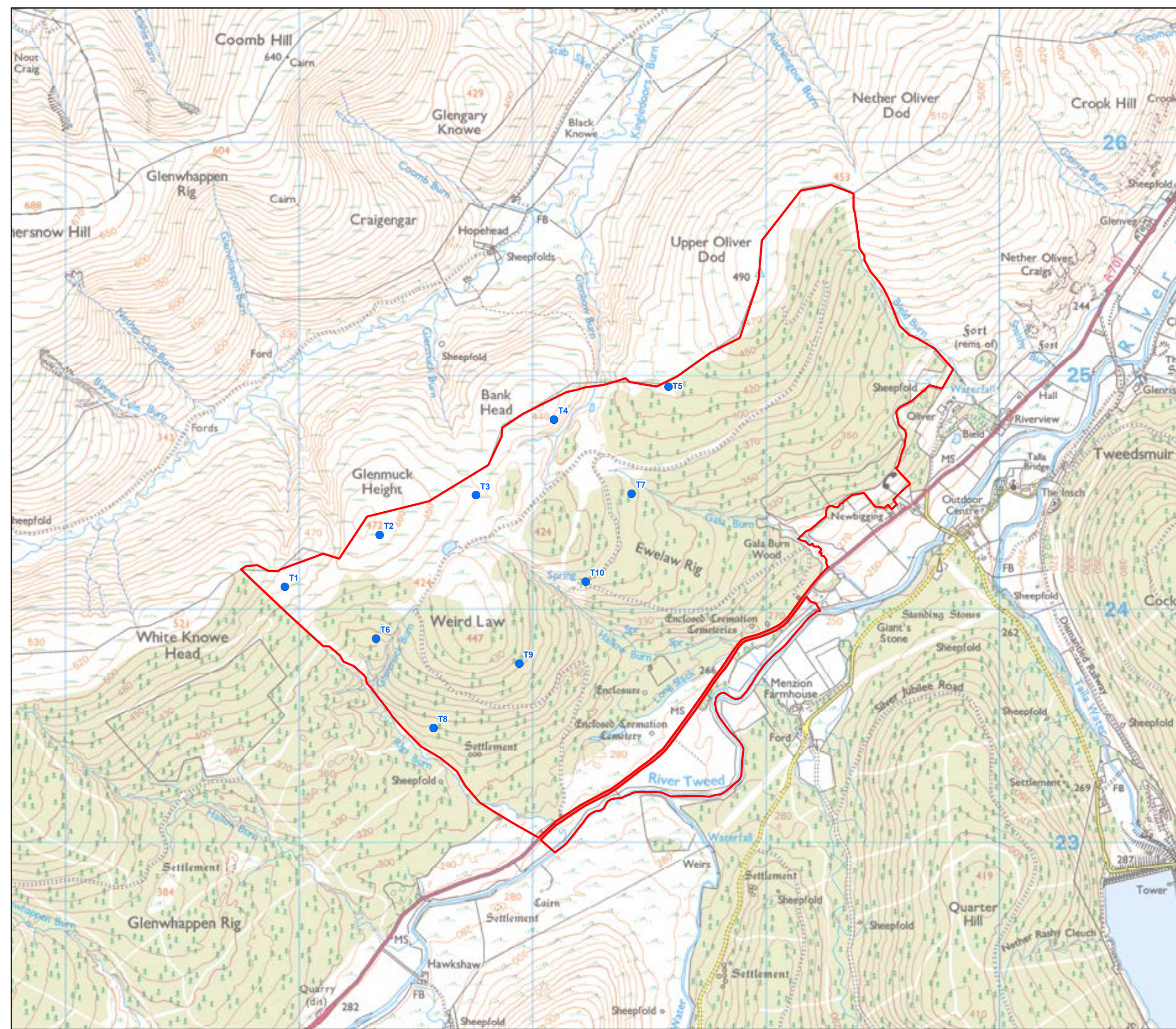
Figure 1 - Site Location Plan





Legend

- Site Boundary
- Indicative Turbine Locations

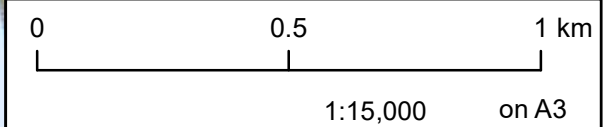


Page Centre: 308,275 624,389	Revision No: 2
Drawn By: JO	Checked By: JK
Date: 11/23/2022	



Oliver Forest Wind Farm

EIA Scoping Report

Figure 2a - Indicative Turbine Locations



Legend

-  Site Boundary
-  Indicative Turbine Location

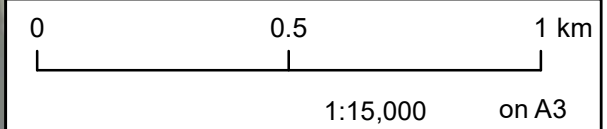


Page Centre: 308,275 624,389	Revision No: 2	
Drawn By: JO	Checked By: JK	Date: 11/23/2022

Oliver Forest Wind Farm

EIA Scoping Report

Figure 2b - Indicative Turbine Locations



Legend

- Site Boundary
- Site Boundary 15 km Buffer
- Indicative Turbine Location
- Cumulative Wind Turbine**
- Application Submitted
- Consented
- Operational

Page Centre: 308,275 624,389	Revision No: 2
Drawn By: JO	Checked By: JK
Date: 03/11/2022	

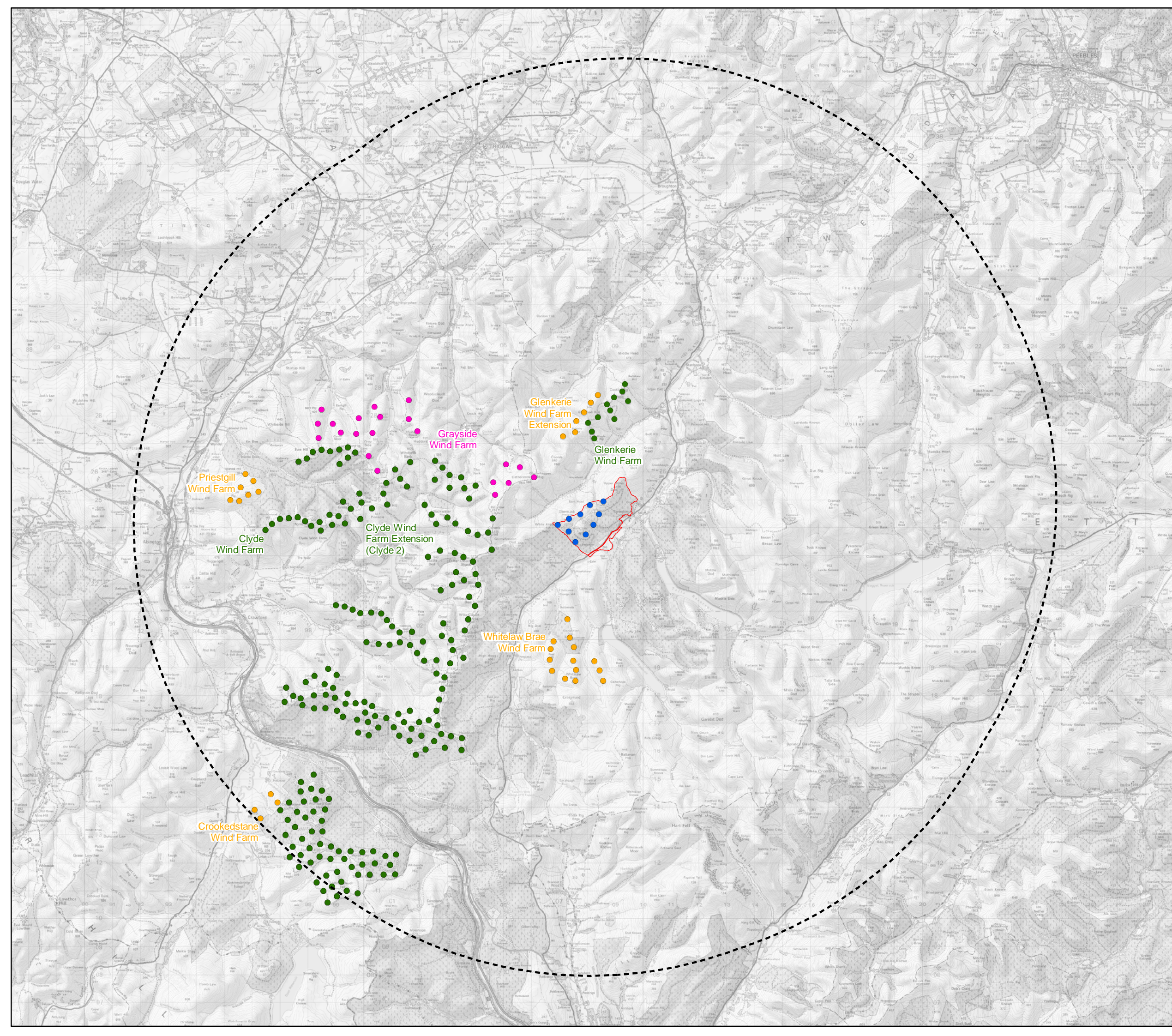
Oliver Forest Wind Farm

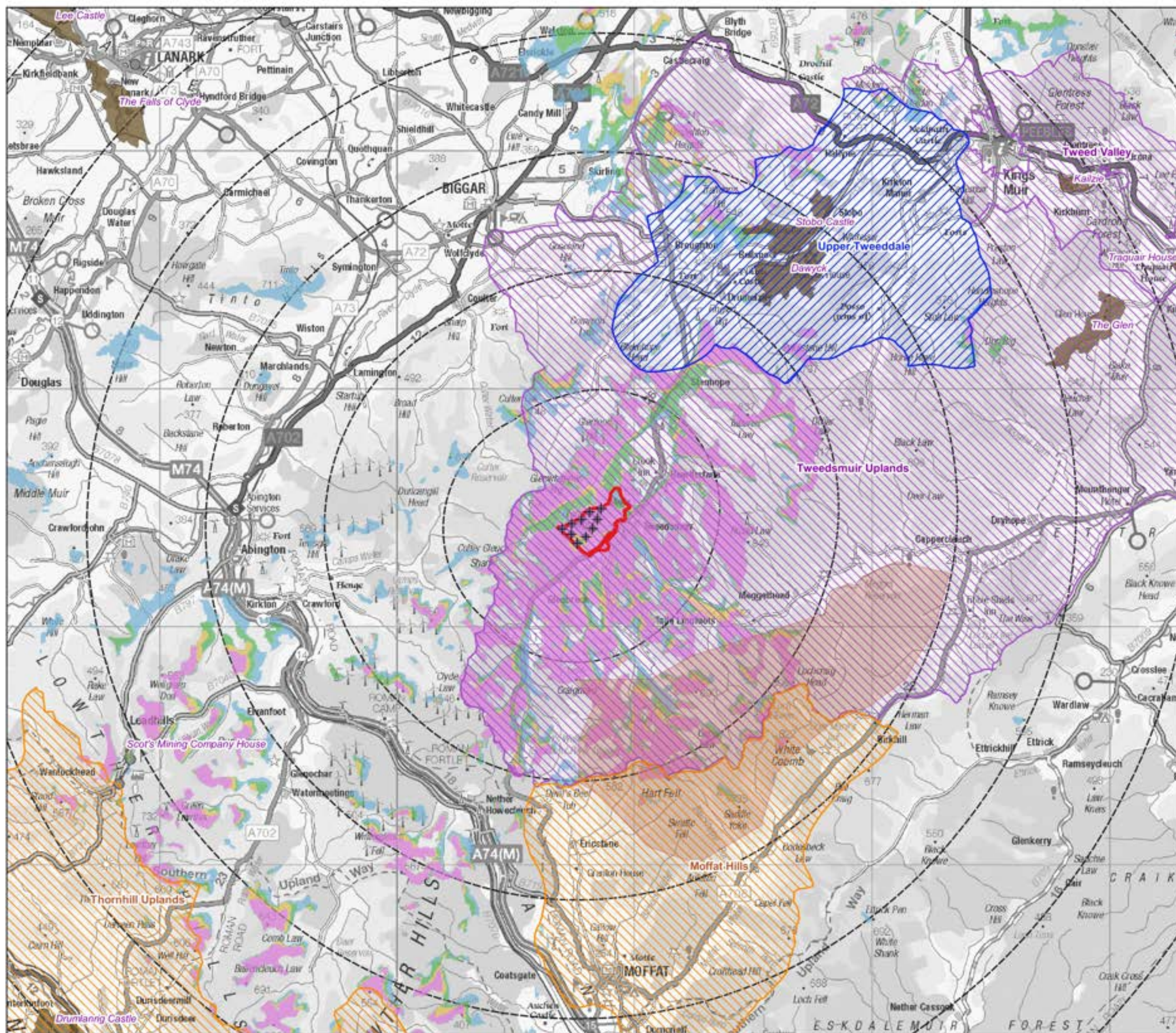
EIA Scoping Report

Figure 3 - Cumulative Context



1:125,000 on A3





Legend

- Turbine locations
- Site boundary
- Buffers (5km intervals)
- Zone of Theoretical Visibility**
- 1-3 turbines visible
- 4-6 turbines visible
- 7-8 turbines visible
- 9-10 turbines visible
- National Scenic Areas
- Scottish Borders Special Landscape Areas
- Dumfries & Galloway Regional Scenic Areas
- Garden & Designed Landscapes
- Wild Land Areas

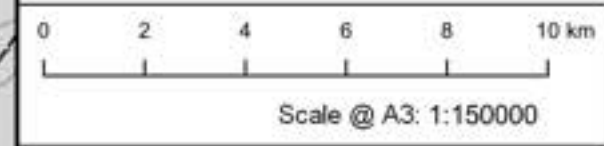
Notes: The ZTV is calculated to turbine tip heights of up to 250m, from a height of 2m above ground level. The terrain model is bare ground derived from OS Terrain 50 height data. Earth curvature and atmospheric refraction have been taken into account.

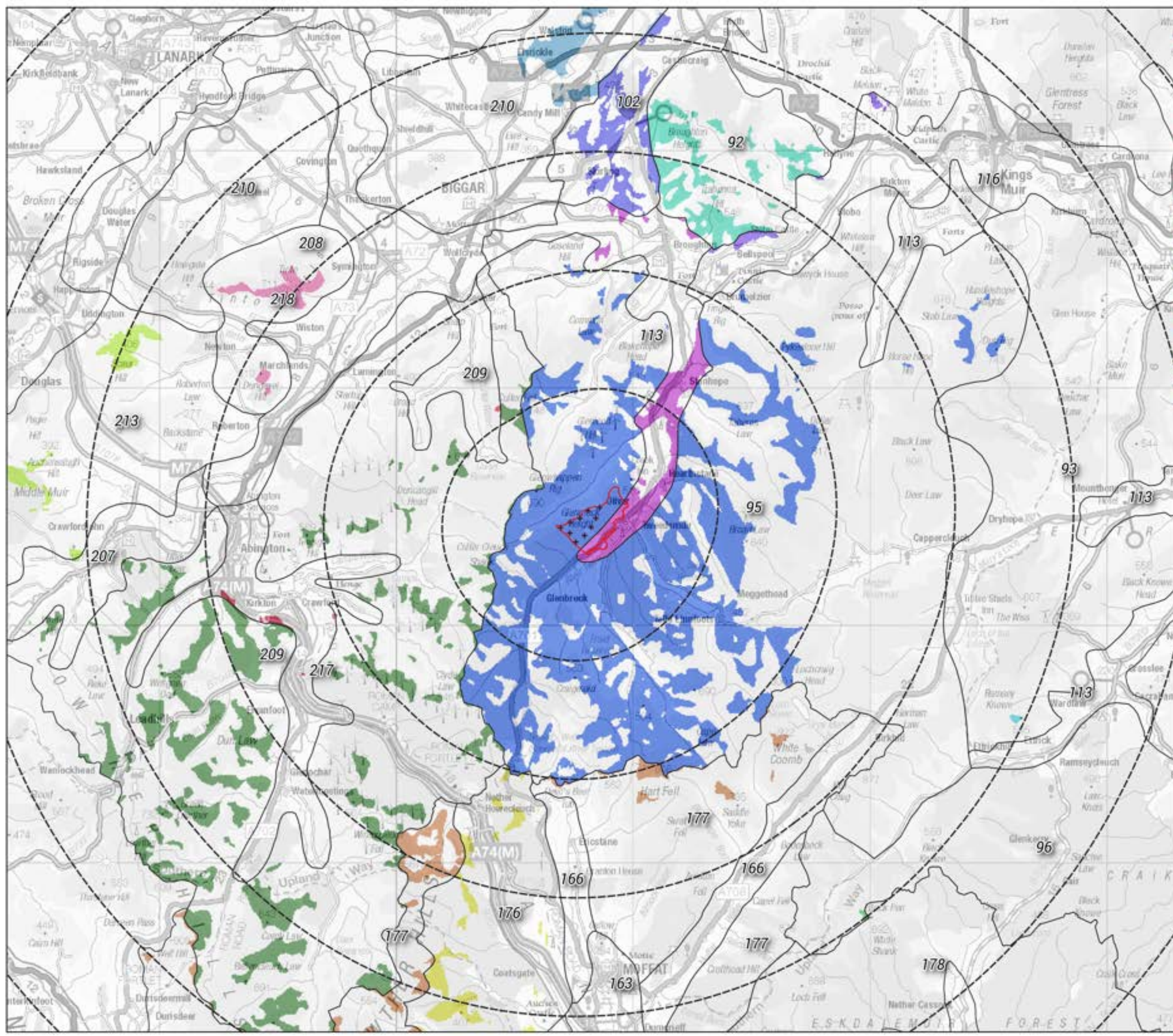
Page centre: 308320, 624430	Ref: 22018-003-r2 TL03_Ext-Layout B
Drawn by: AS	Checked by: BD
Date: 22/11/2022	

Oliver Forest Wind Farm

EIA Scoping Report

Figure 4 - Designated Landscapes





Legend

- Turbine locations
- Site boundary
- Buffers (5km intervals)

Landscape Character Types

- 92 Plateau Outliers
- 95 Southern Uplands - Borders
- 102 Upland Fringe with Prominent Hills
- 113 Upland Valley with Pastoral Floor
- 116 Upland Valley with Woodland
- 176 Foothills with Forest - D & G
- 177 Southern Uplands - D & G
- 207 Upland River Valley - G & CV
- 209 Upland Glen - G & CV
- 210 Undulating Farmland and Hills
- 213 Plateau Moorlands - G & CV
- 218 Rounded Landmark Hills
- 217 Southern Uplands - G & CV

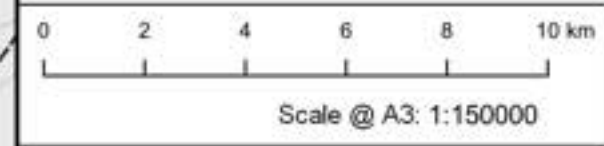
Note:
 Dumfries & Galloway (D & G)
 Glasgow & Clyde Valley (G & CV)
 Areas without colour are outside the Zone of Theoretical Visibility

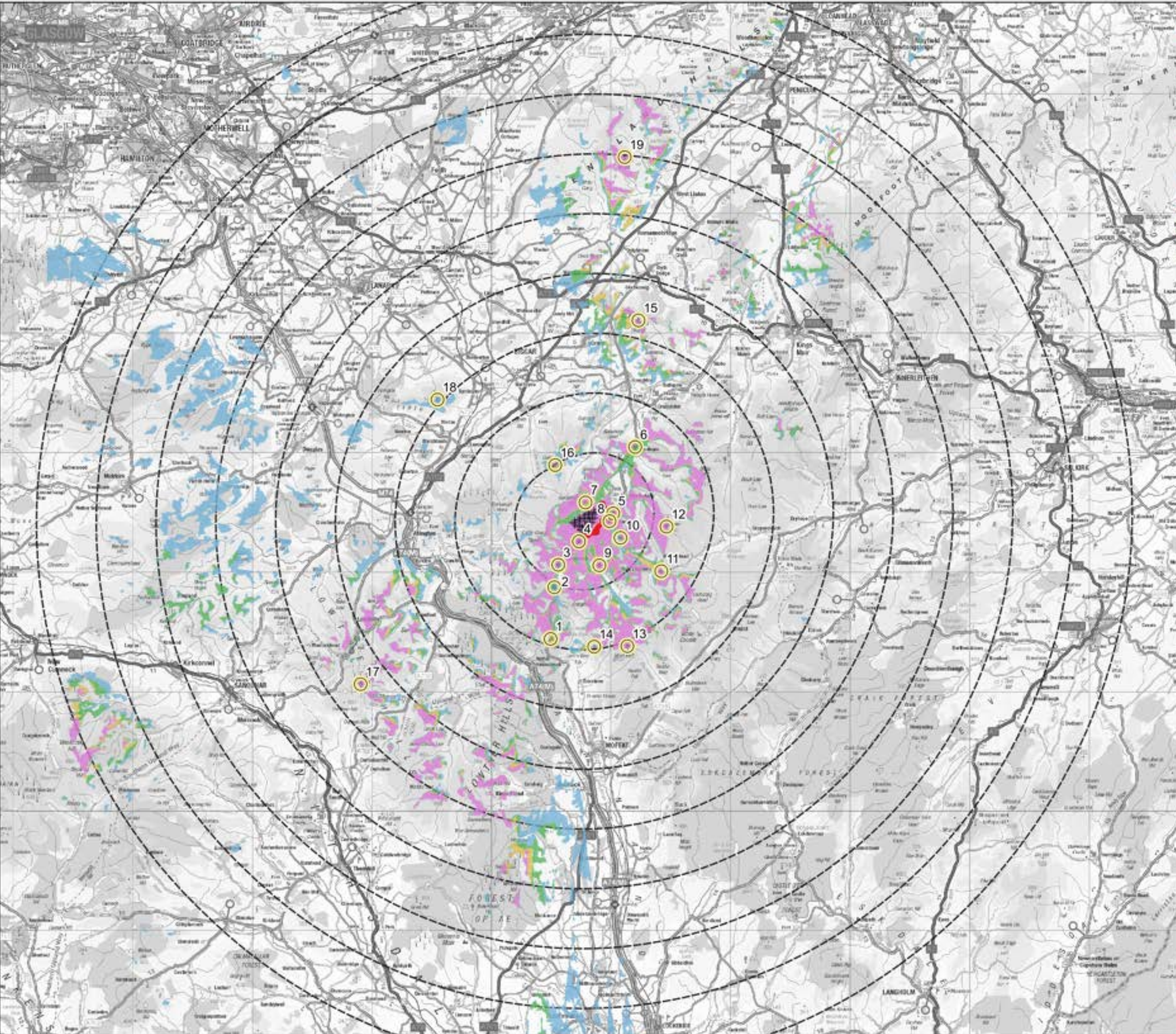
Notes: The ZTV is calculated to turbine tip heights of up to 250m, from a height of 2m above ground level. The terrain model is bare ground derived from OS Terrain 50 height data. Earth curvature and atmospheric refraction have been taken into account.

Page centre: 308320, 624430	Ref: 22018-004-r2 TL03_Ext-Layout B
Drawn by: AS	Checked by: BD
	Date: 22/11/2022

Oliver Forest Wind Farm

**EIA Scoping Report
 Figure 5 - Landscape Character
 Types within the Zone of
 Theoretical Visibility**





Legend

- Site boundary
- Buffers (5km intervals)
- Zone of Theoretical Visibility**
- 1-3 turbines visible
- 4-6 turbines visible
- 7-8 turbines visible
- 9-10 turbines visible
- Viewpoints

- UP1 4701 Source of Tweed Leghy
- UP2 4701 by Craigmoid Hill
- UP3 4701 Leghy west of Glasbrack
- UP4 4701 Leghy East of Glasbrack
- UP5 4701 by Tweedmill Village Hall
- UP6 4701 Stanhope
- UP7 Track along Kingledors Burn
- UP8 Tweedmill Bridge
- UP9 Fruid Gae
- UP10 Falls Gae Car Park
- UP11 Falls Linfests
- UP12 Broad Law
- UP13 Hart Fall
- UP14 Chalk Rig Edge/Innendale Way
- UP15 Broughton Heights
- UP16 Culter Fall
- UP17 Lowther Hill/Southern Upland Way
- UP18 Tinds
- UP19 Bryshope Hunt

Notes: The ZTV is calculated to turbine tip heights of up to 250m, from 2m above ground level. The terrain model is bare ground derived from OS Terrain 50 height data. Earth curvature and atmospheric refraction are taken into account.

Page centre: 308320, 624430	Ref: 22018-002-r3 TL03_Ext-Layout B
Drawn by: AS	Checked by: BD
Date: 22/11/2022	

Oliver Forest Wind Farm


EIA Scoping Report

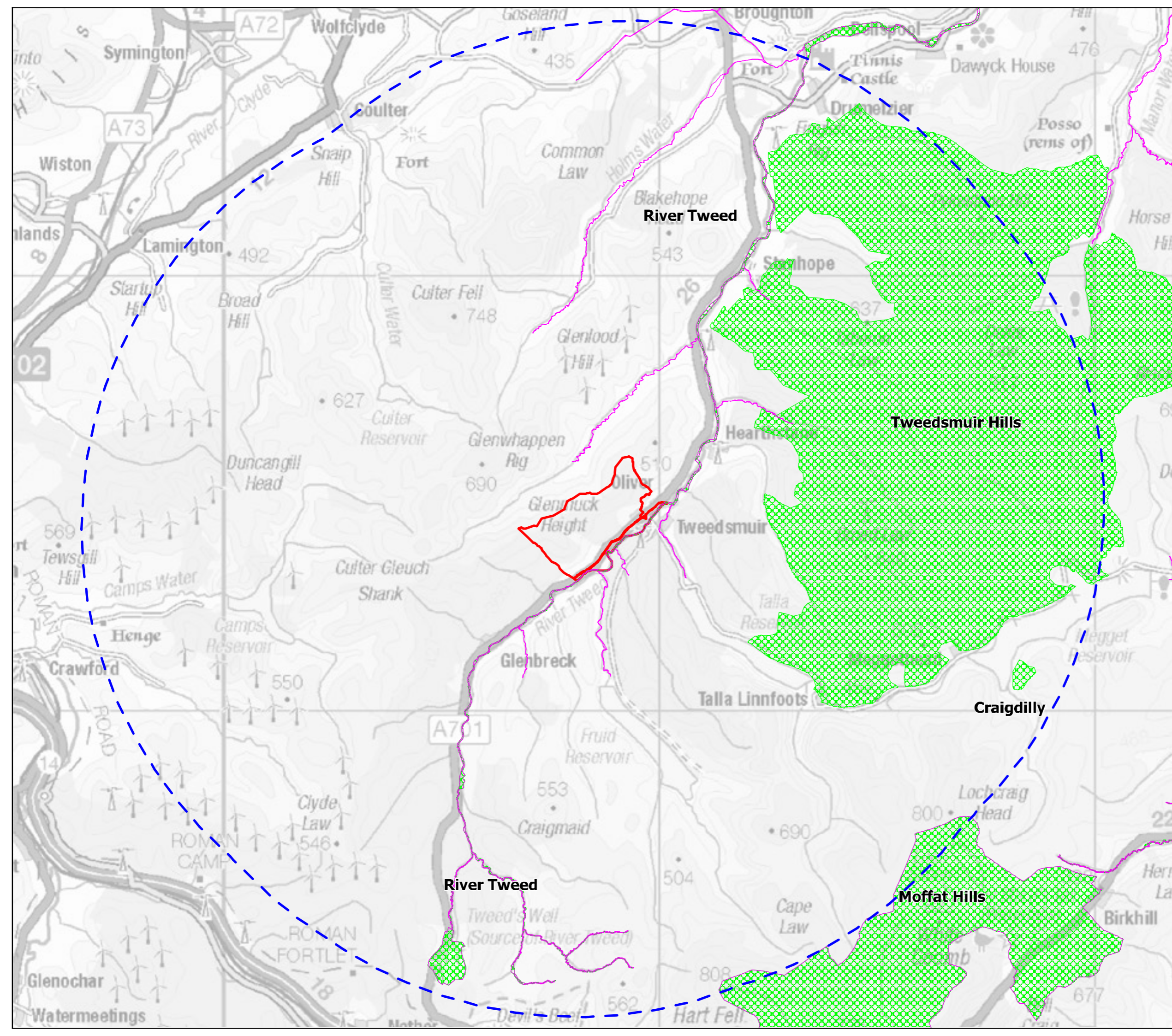
Figure 6 - Zone of Theoretical Visibility and Viewpoints





Legend

-  Site Boundary
-  10km Buffer
- Designated Site
-  SSSI
-  SAC



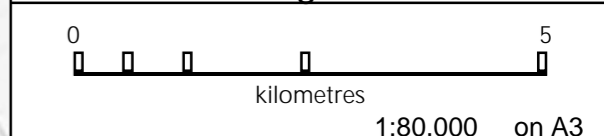
Page Centre: 308,275 624,389	Revision No: 1
---------------------------------	-------------------

Drawn By: HD	Checked By: LG	Date: 21/10/2022
-----------------	-------------------	---------------------

Oliver Forest Wind Farm

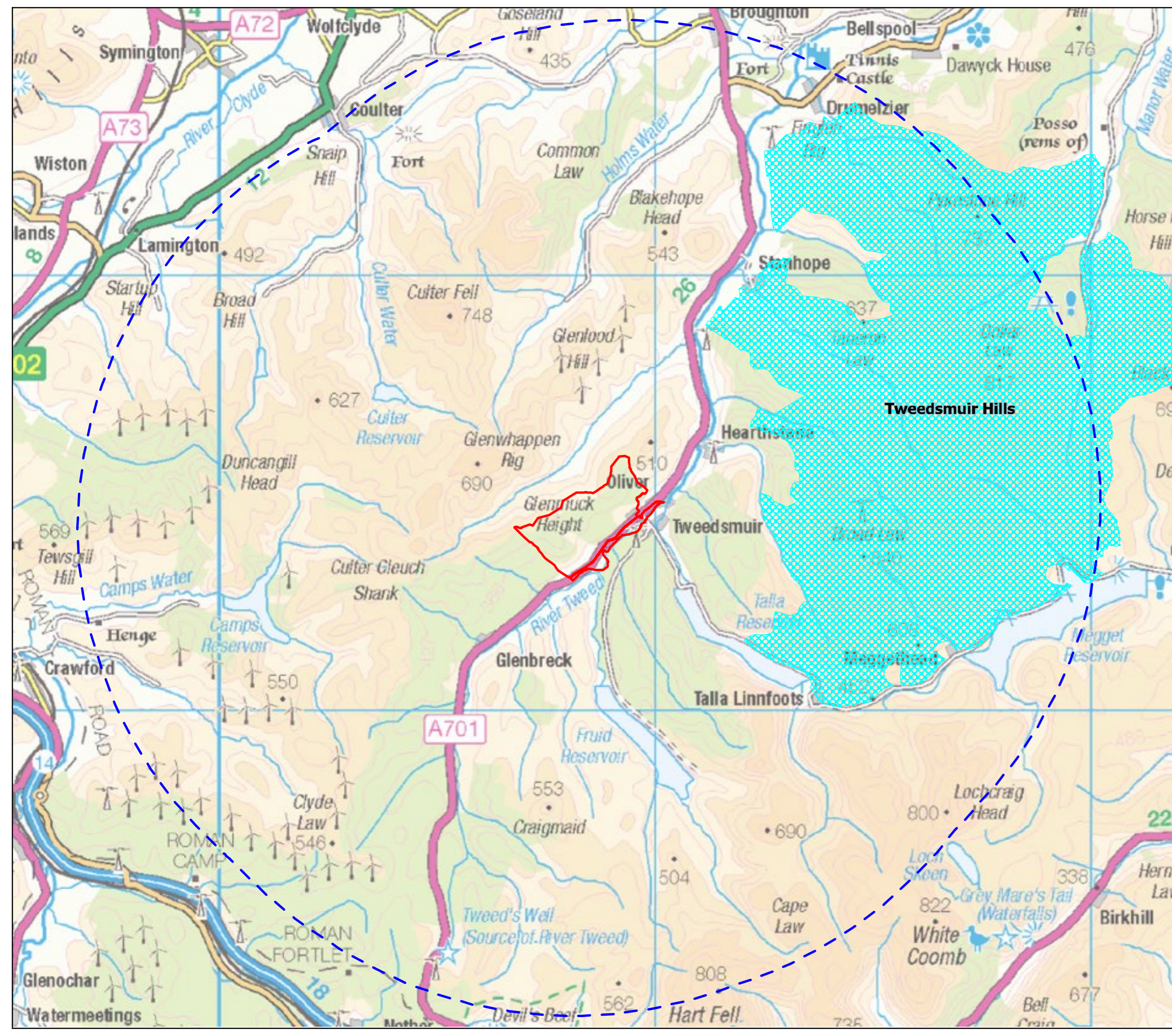
EIA Scoping Report

Figure 7 - Statutory Designated Sites For Nature Conservation With Ecological Interest



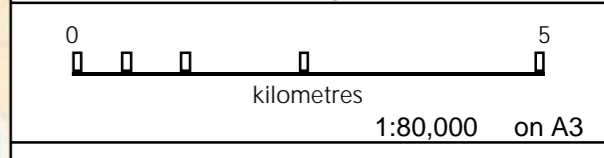
Legend

- Site Boundary
- 10km Buffer
- Designated Site
- SSSI



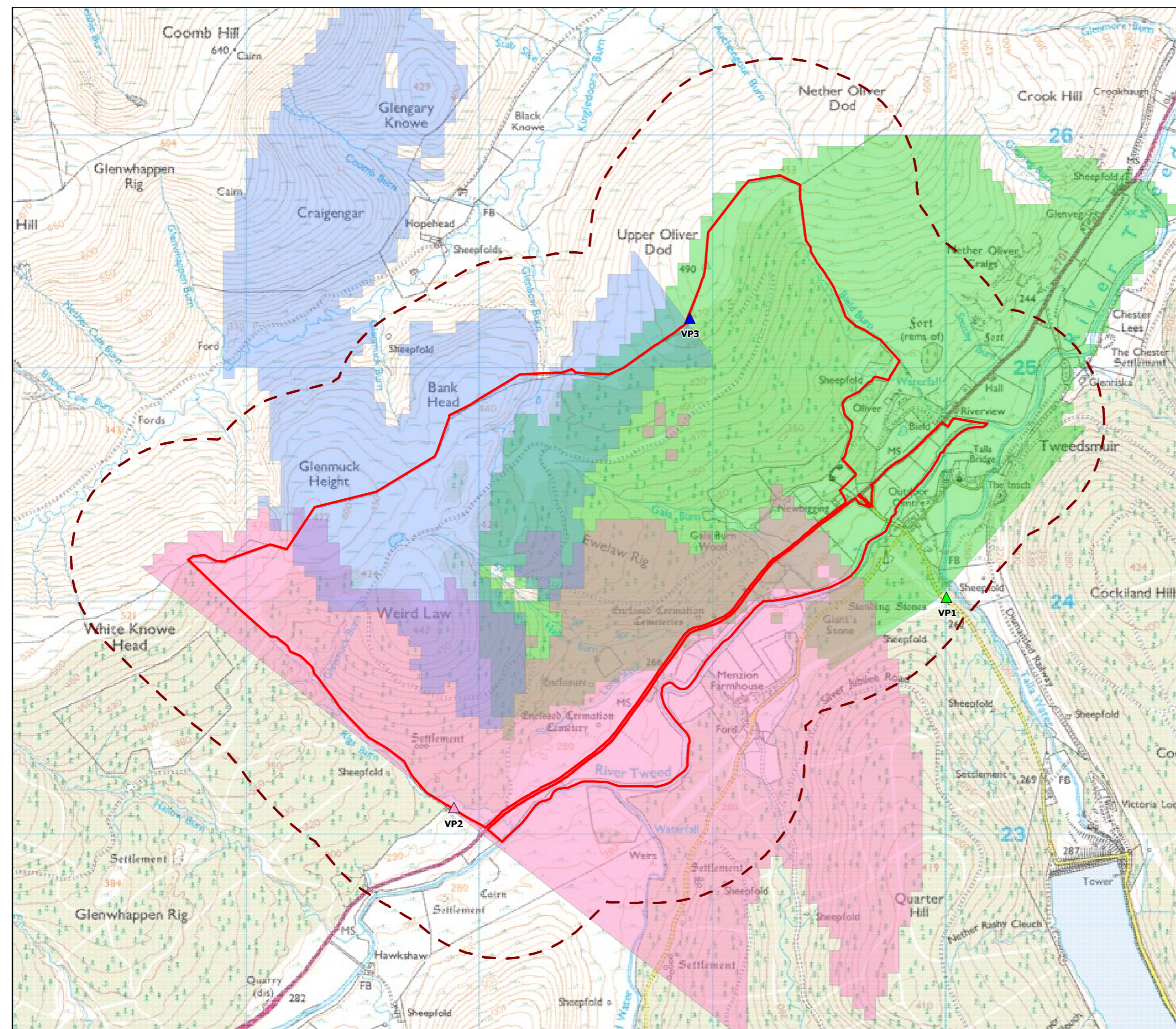
Page Centre: 308,275 624,389	Revision No: 1
Drawn By: HD	Checked By: LG
Date: 21/10/2022	

Oliver Forest Wind Farm
EIA Scoping Report
Figure 8 - Statutory Designated Sites For Nature Conservation With Ornithological Interest



Legend

- Site Boundary
- 500m Buffer
- Indicative Vantage Point
- ▲ VP1 (NT1000524015)
- ▲ VP2 (NT0789023112)
- ▲ VP3 (NT0890325212)
- VP1 Viewshed
- VP2 Viewshed
- VP3 Viewshed



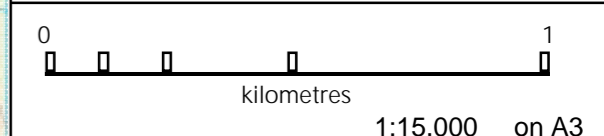
Page Centre: 308,275 624,389	Revision No: 1
---------------------------------	-------------------

Drawn By: HD	Checked By: LG	Date: 21/10/2022
-----------------	-------------------	---------------------

Oliver Forest Wind Farm

EIA Scoping Report

Figure 9 - Viewshed and Vantage Point Location Plan



Legend

- Site boundary
- 1km Study area
- 5km Study area
- 10km Study area
- Scheduled Monument extent
- Gardens Designed Landscapes extent
- ▲ Category B Listed Building
- ▲ Category C Listed Building
- Non designated heritage asset

Theoretical Visibility

- 1-3 turbines visible
- 4-6 turbines visible
- 7-8 turbines visible
- 9-10 turbines visible
- no turbines visible

Page Centre:
311,987 624,515

Revision No:

Drawn By:
LB

Checked By:
LR

Date:
22/11/2022

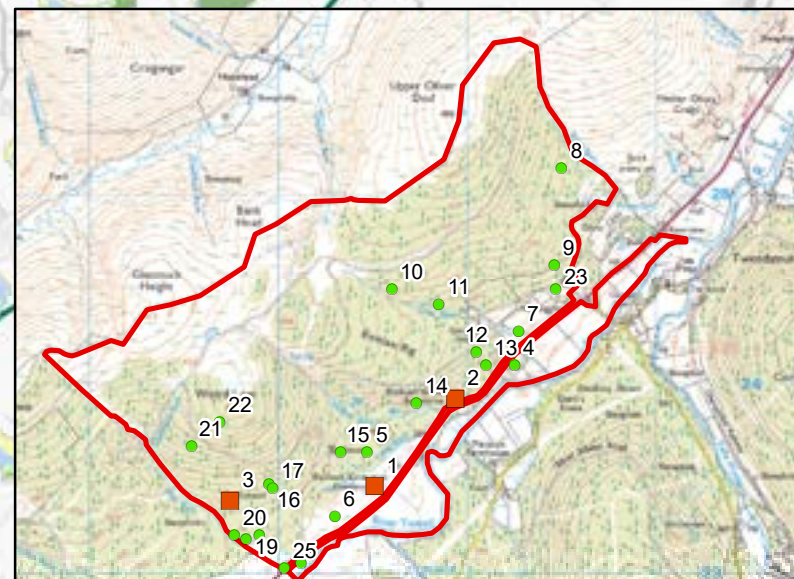
Oliver Forest Wind Farm

EIA Scoping Report

Figure 10 - Heritage Assets within the 10km Study Area

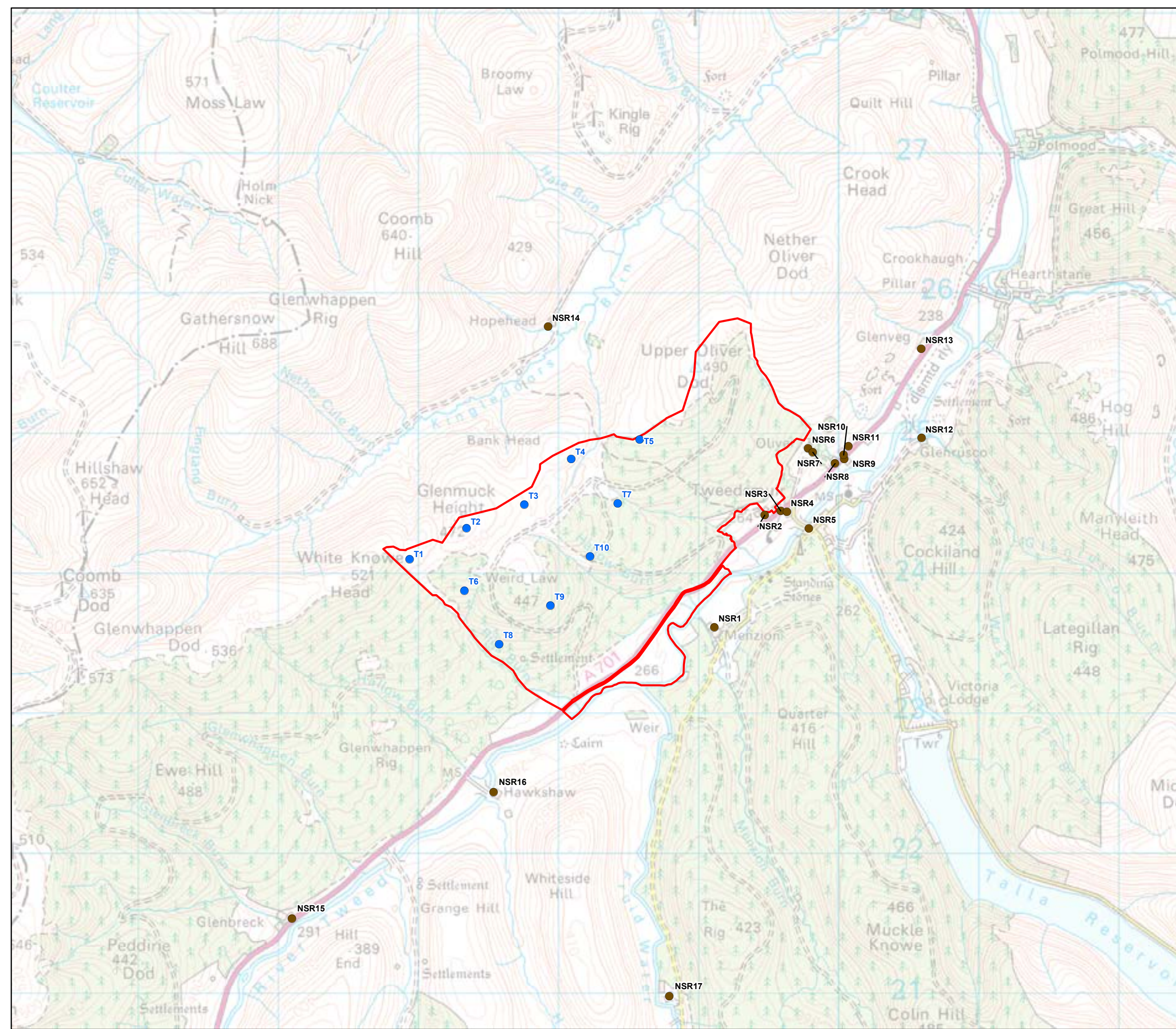
0 2 4 km

1:90,000 on A3



Legend

- Site Boundary
- Indicative Turbine Location
- Noise Sensitive Receptor



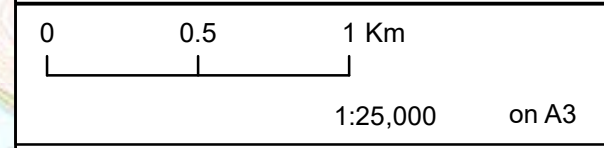
Page Centre: 308,275 624,389	Revision No: 2
---------------------------------	-------------------

Drawn By: JO	Checked By: JK	Date: 11/3/2022
-----------------	-------------------	--------------------

Oliver Forest Wind Farm

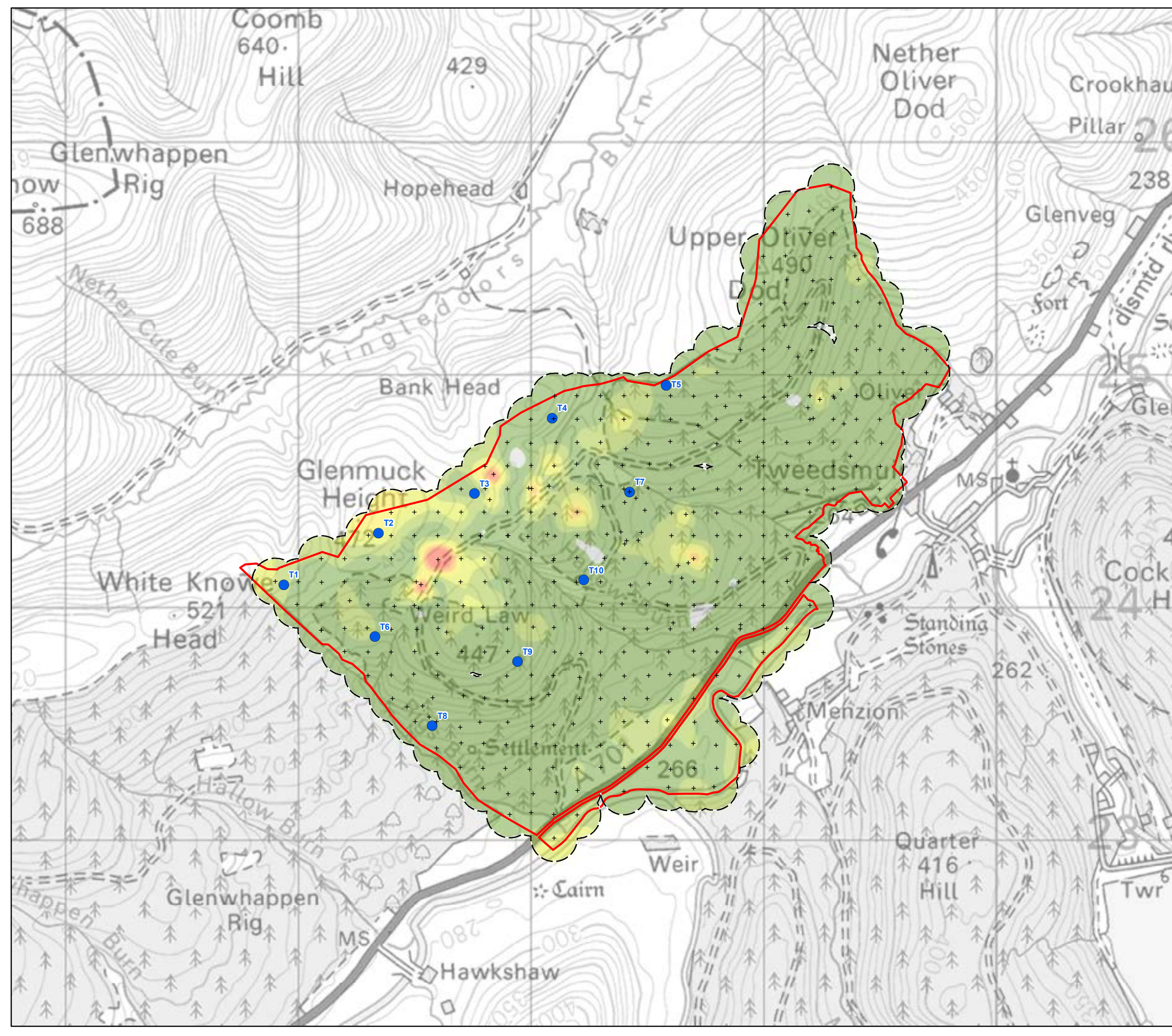
EIA Scoping Report

Figure 11 - Noise Sensitive Receptors



Legend

- Site Boundary
 - Indicative Turbine Location
 - + Peat Probing Location
- Peat Depth (m)**
- 0
 - 0 - 0.5
 - 0.5 - 1
 - 1 - 1.5
 - 1.5 - 2
 - 2 - 2.5
 - 2.5 - 3
 - > 3



Page Centre: 308,275 624,389	Revision No: 2
Drawn By: JO	Checked By: JK
Date: 03/11/2022	

Oliver Forest Wind Farm

EIA Scoping Report

Figure 12 - Peat Depth Plan

1:15,000 on A3

Legend
 Site

WPAC
 Wind Power Aviation Consultants Ltd

Page Centre:	Revision No:
Drawn By: ST MSc	Checked By: JT CDR Rt
Date: 09/11/2022	

Oliver Forest Wind Farm
 EIA Scoping Report
 Figure 13 - 250k Chart Extract

0 7 14 km

1:300,000 on A3

Ordnance Survey © Crown Copyright 2022.
 All rights reserved.
 LICENCE AGREEMENT
 NATS NO. 2594-XX-2441

