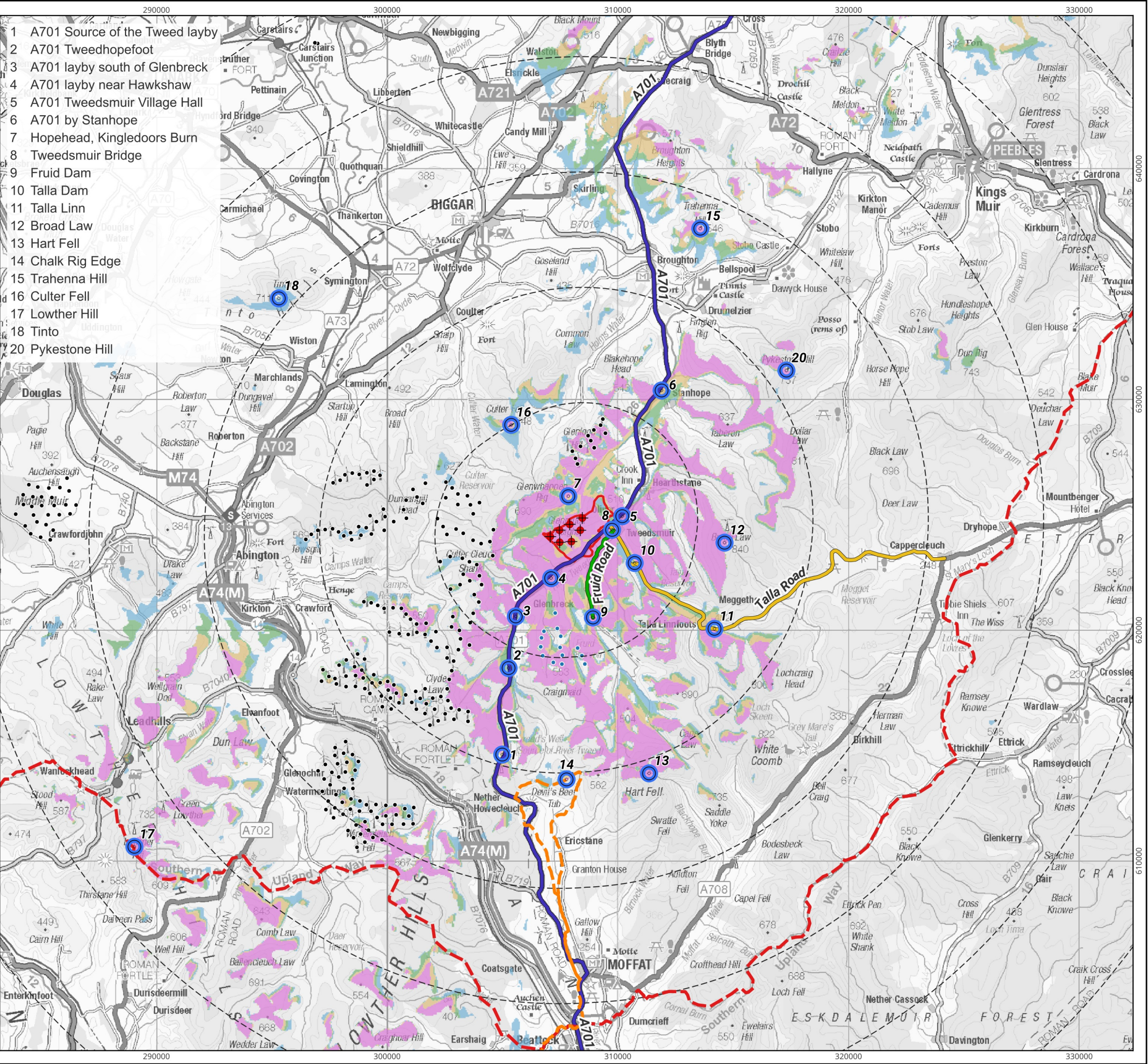


MVGLA Ref: 22018-106-r4, Layout: TL15: VPs: VA
 Reproduced from Ordnance Survey digital map data. Contains public sector information licensed under the Open Government Licence v3.0.

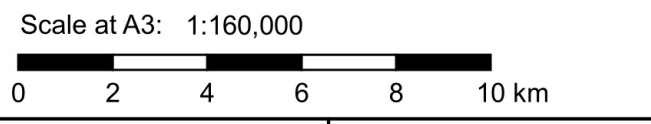


- 1 A701 Source of the Tweed layby
- 2 A701 Tweedhopefoot
- 3 A701 layby south of Glenbreck
- 4 A701 layby near Hawkshaw
- 5 A701 Tweedsmuir Village Hall
- 6 A701 by Stanhope
- 7 Hopehead, Kingledors Burn
- 8 Tweedsmuir Bridge
- 9 Fruid Dam
- 10 Talla Dam
- 11 Talla Linn
- 12 Broad Law
- 13 Hart Fell
- 14 Chalk Rig Edge
- 15 Trahenna Hill
- 16 Culter Fell
- 17 Lowther Hill
- 18 Tinto
- 20 Pykestone Hill



- Site Boundary
- ◆ Proposed Turbine Location
- Distance to turbines (5km intervals)
- Other Wind Farms
 - existing
 - under construction
- Zone of Theoretical Visibility
 - 1-2 turbines visible
 - 3-4 turbines visible
 - 5-6 turbines visible
 - 7 turbines visible
- Roads
 - A701 - Moffat to Blyth Bridge
 - Talla Road
 - Fruid Road
- Recreational Routes
 - Southern Upland Way
 - Annandale Way
- Viewpoints (see inset table for details)

Notes: The ZTV is calculated to a turbine tip height of 200m from a height of 2m above ground level. The terrain model is bare ground derived from OS Terrain 50 Height data. Earth curvature and atmospheric refraction have been taken into account. Symbols not to scale.



Produced By: BP	Version: 22018-106-r4
Checked By: BD	Date: 31/05/2024

Figure 7.6
Visual Receptors
Oliver Forest Wind Farm
Environmental Impact Assessment Report