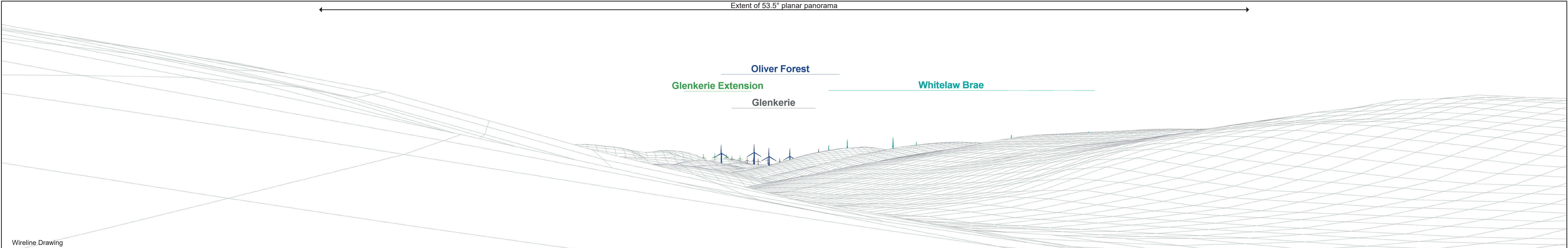




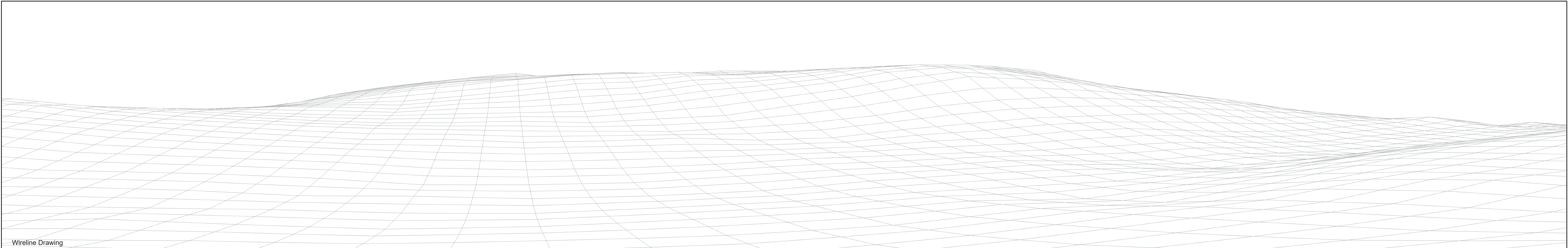
Extent of 53.5° planar panorama



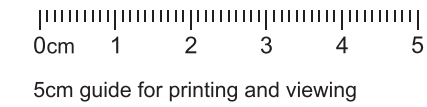
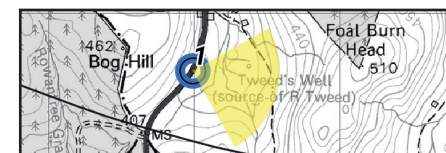


Baseline Photograph

This image provides landscape and visual context only



Wireline Drawing



- ✂ Proposal
- ✂ Application
- ✂ Scoping
- ✂ Existing
- ✂ Consented
- ✂ Under Construction

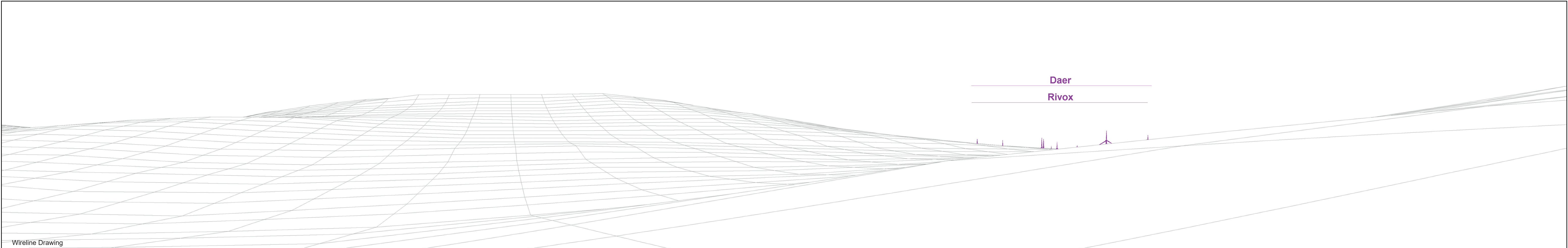
OS Reference: 305004 614636
 Eye Level: 398.92m AOD
 Direction of View: 106°
 Distance to Development: 9497 m

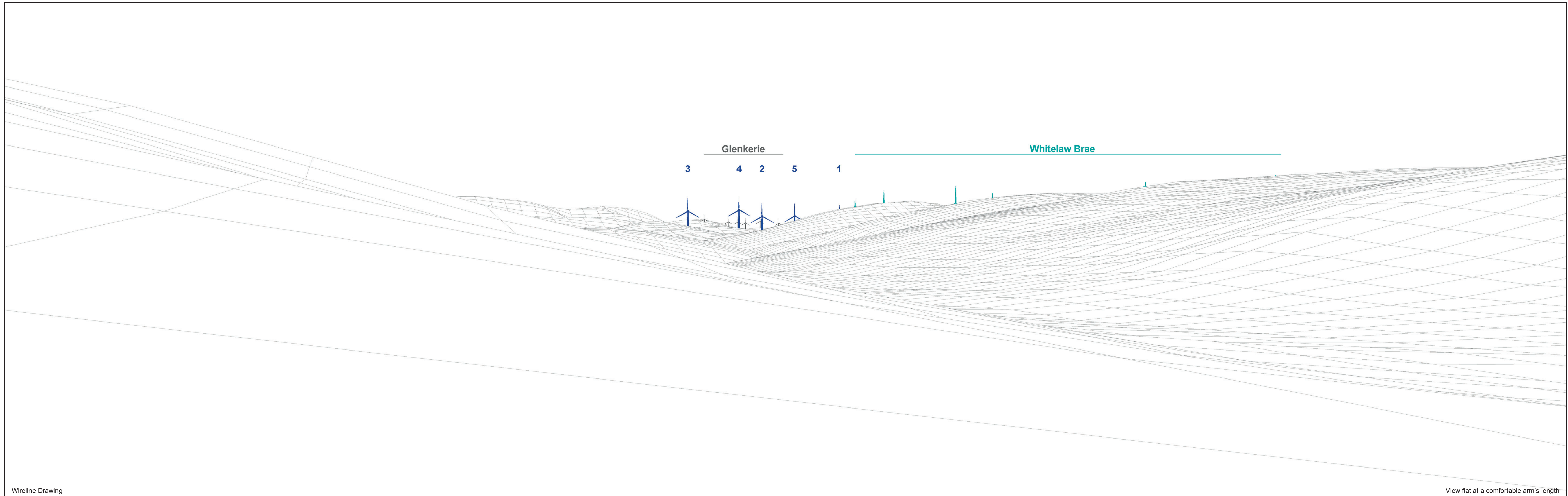
Horizontal field of view: 90° (cylindrical projection)
 Principal Distance: 522mm
 Paper Size: 841 x 297 mm
 Correct printed image size: 820 x 130 mm

Camera: NIKON D610
 Lens: 50mm
 Camera Height: 1.5m AGL
 Date and Time: 17/8/2023 15:10

Viewpoint 1: A701 Source of the Tweed Layby

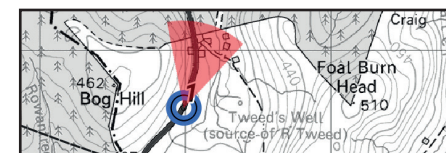
Figure: 7.13b






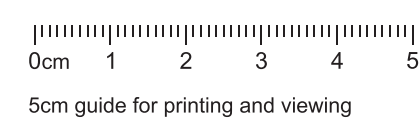


Wireline Drawing

View flat at a comfortable arm's length



 Proposal
  Existing
  Under Construction



OS Reference: 305004 614636
 Eye Level: 398.92m AOD
 Direction of View: 16°
 Distance to Development: 9497 m

Horizontal field of view: 53.5° (planar projection)
 Principal Distance: 812.5mm
 Paper Size: 841 x 297 mm
 Correct printed image size: 820 x 260 mm

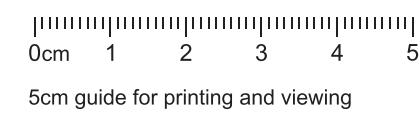
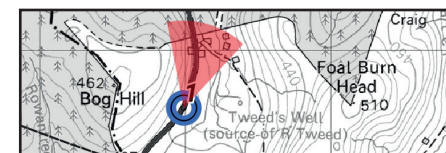
Camera: NIKON D610
 Lens: 50mm
 Camera Height: 1.5m AGL
 Date and Time: 17/8/2023 15:10

Figure: 7.13d
 Viewpoint 1: A701 Source of the Tweed Layby



Photomontage

View flat at a comfortable arm's length



OS Reference: 305004 614636
 Eye Level: 398.92m AOD
 Direction of View: 16°
 Distance to Development: 9497 m

Horizontal field of view: 53.5° (planar projection)
 Principal Distance: 812.5mm
 Paper Size: 841 x 297 mm
 Correct printed image size: 820 x 260 mm

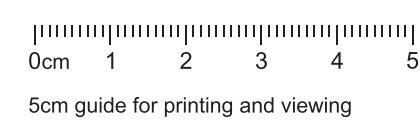
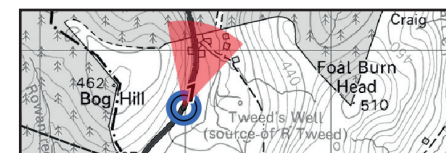
Camera: NIKON D610
 Lens: 50mm
 Camera Height: 1.5m AGL
 Date and Time: 17/8/2023 15:10

Figure: 7.13e
 Viewpoint 1: A701 Source of the Tweed Layby



Photomontage

View flat at a comfortable arm's length



OS Reference: 305002 614642
 Eye Level: 398.92m AOD
 Direction of View: 16°
 Distance to Development: 9497 m

Horizontal field of view: 53.5° (planar projection)
 Principal Distance: 812.5mm
 Paper Size: 841 x 297 mm
 Correct printed image size: 820 x 260 mm

Camera: NIKON D610
 Lens: 50mm
 Camera Height: 1.5m AGL
 Date and Time: 29/8/2023 20:50

Figure: 7.13f
 Viewpoint 1: A701 Source of the Tweed Layby