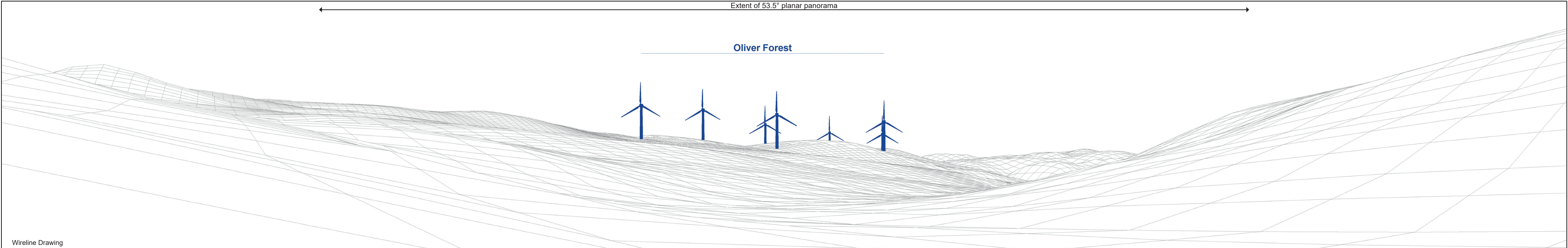
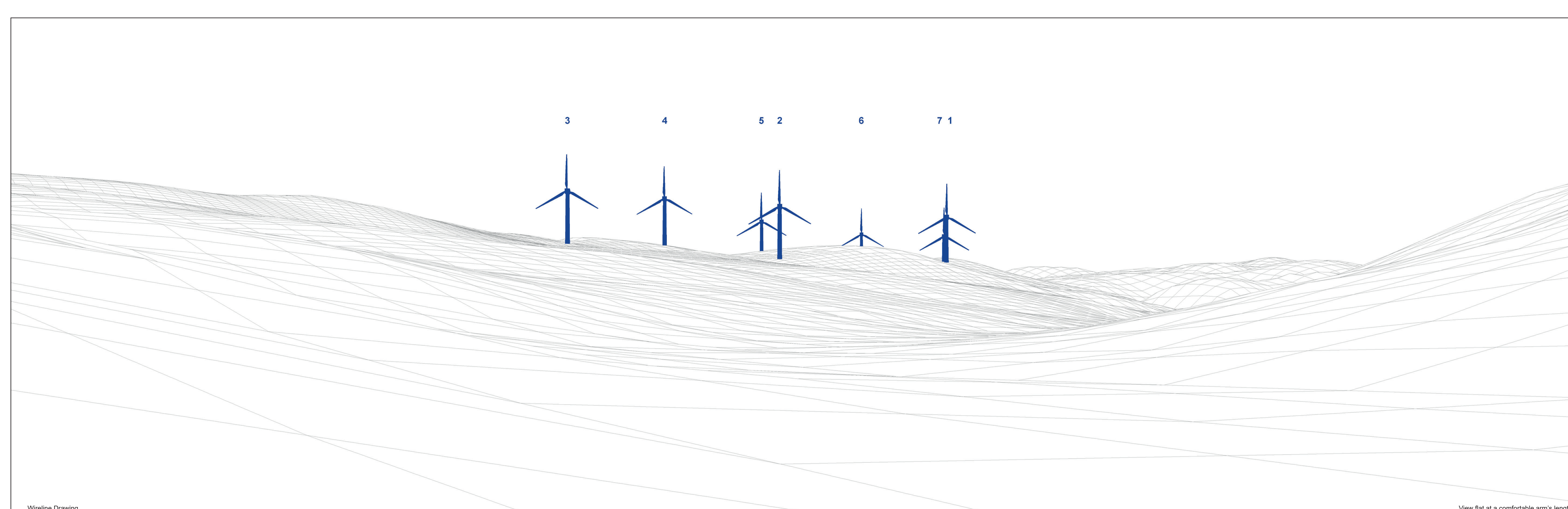




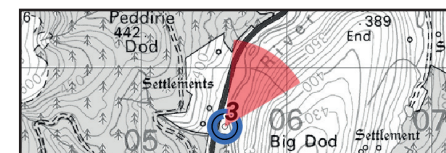
Extent of 53.5° planar panorama






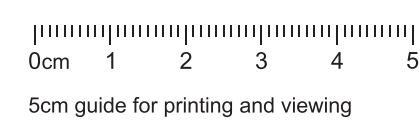


Wireline Drawing

View flat at a comfortable arm's length



 Proposal
  Existing
  Under Construction



OS Reference: 305593 620850
 Eye Level: 299.58m AOD
 Direction of View: 33°
 Distance to Development: 3507 m

Horizontal field of view: 53.5° (planar projection)
 Principal Distance: 812.5mm
 Paper Size: 841 x 297 mm
 Correct printed image size: 820 x 260 mm

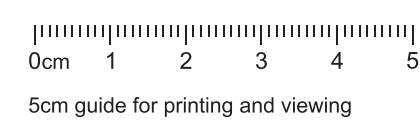
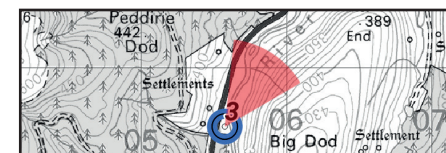
Camera: NIKON D610
 Lens: 50mm
 Camera Height: 1.5m AGL
 Date and Time: 17/8/2023 16:15

Figure: 7.15b
 Viewpoint 3: A701 layby south of Glenbreck



Photomontage

View flat at a comfortable arm's length



OS Reference: 305593 620850
 Eye Level: 299.58m AOD
 Direction of View: 33°
 Distance to Development: 3507 m

Horizontal field of view: 53.5° (planar projection)
 Principal Distance: 812.5mm
 Paper Size: 841 x 297 mm
 Correct printed image size: 820 x 260 mm

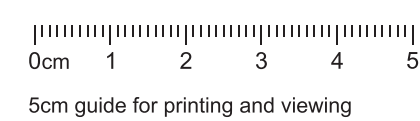
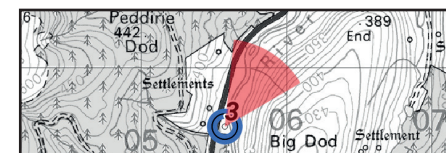
Camera: NIKON D610
 Lens: 50mm
 Camera Height: 1.5m AGL
 Date and Time: 17/8/2023 16:15

Figure: 7.15c
 Viewpoint 3: A701 layby south of Glenbreck



Photomontage

View flat at a comfortable arm's length



OS Reference: 305592 620850
 Eye Level: 299.58m AOD
 Direction of View: 33°
 Distance to Development: 3507 m

Horizontal field of view: 53.5° (planar projection)
 Principal Distance: 812.5mm
 Paper Size: 841 x 297 mm
 Correct printed image size: 820 x 260 mm

Camera: NIKON D610
 Lens: 50mm
 Camera Height: 1.5m AGL
 Date and Time: 5/9/2023 20:22

Figure: 7.15d
 Viewpoint 3: A701 layby south of Glenbreck