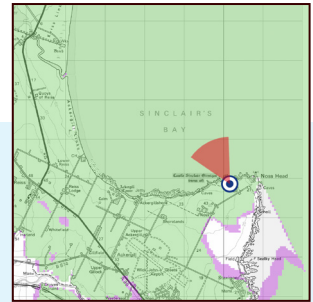


Viewpoints

Visualisations from four local viewpoints have been produced to compare the proposed redesign with the previously consented scheme.



Viewpoint 1: Castle Sinclair Girnigoe

Consented Layout



Proposed Layout



Distance to nearest turbine: 11.9km (11.7km to consented layout)

British National Grid Reference: 338159 954861

View direction: 331° (north-west)

Photomontage: horizontal field of view of 53.5° (planar projection)

Images have been scaled down proportionately (25%) for online viewing purposes