



# WEST ANDERSHAW WIND FARM

PREDICTED VIEWS

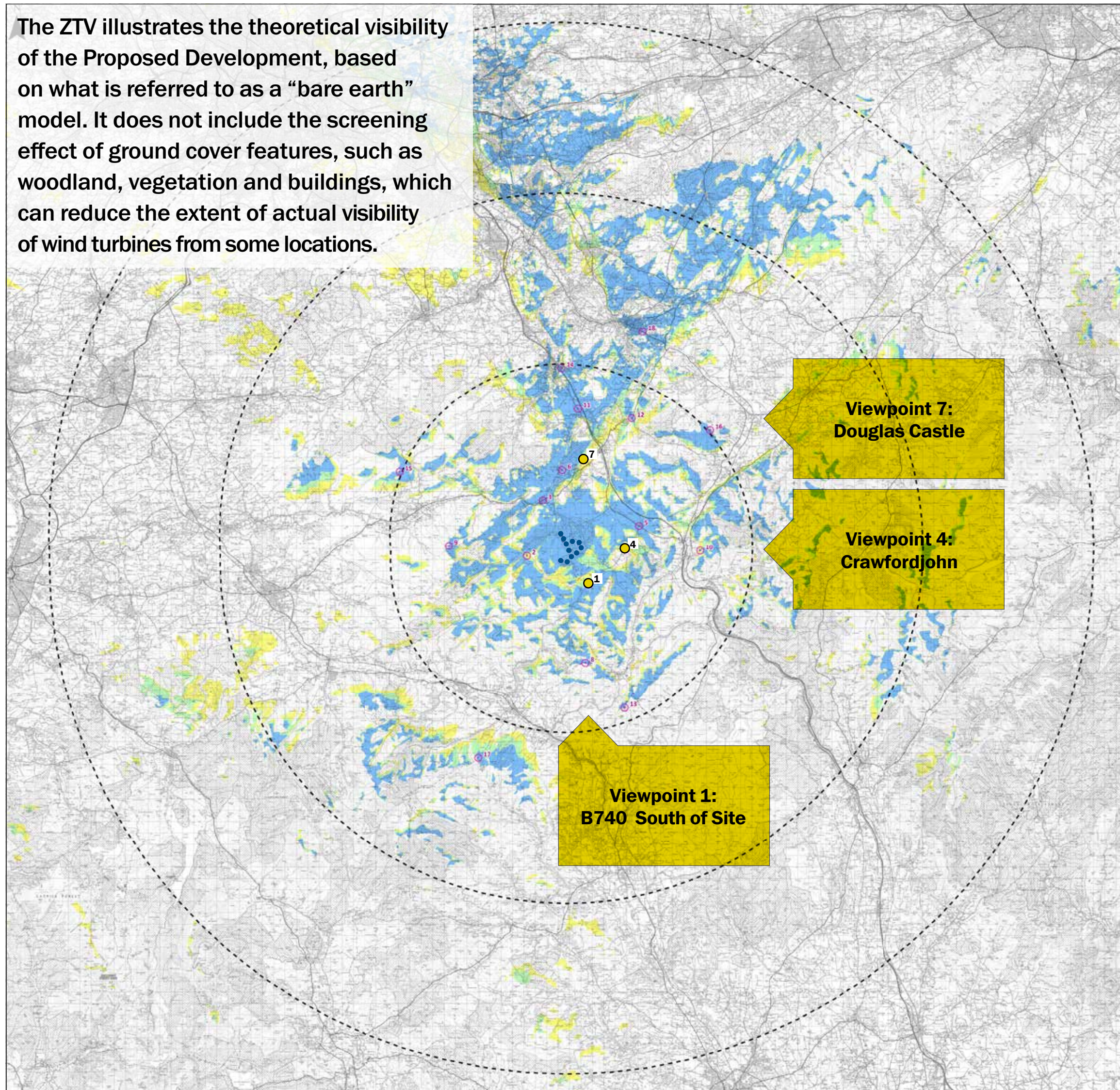
---

9 August - 27 August 2021



We are currently in the process of agreeing locations of viewpoints with South Lanarkshire Council and NatureScot to ensure the most suitable locations are selected to illustrate the effects of the wind farm. The locations of these will be available to view at our second exhibition, before an application is submitted.

Three visualisations have been provided to demonstrate how the proposed wind farm would look at its maximum size of 11 turbines at 250m to blade tip. We will refine the project according to results of ongoing surveys and community feedback.



**Key**

- Indicative Turbine Location
- Distance Radii from Outermost Turbine (15, 20, 45km)

**Zone of Theoretical Visibility to Blade Tip (250m)**

- 1 - 4 turbines may be visible
- 5 - 8 turbines may be visible
- 9 - 11 turbines may be visible

**● Predicted Viewpoints included in brochure:**

- 1 B740 South of Site
- 4 Crawfordjohn
- 7 Douglas Castle

**○ Other Predicted Viewpoint Locations**

- 2 Upper Duneaton Water Valley
- 3 Glespin
- 5 B7078 East of Site
- 6 Douglas West
- 8 Southern Upland Way near Glengaber Hill
- 9 Cairn Table
- 10 Arbory Hill
- 11 B7078 near Cairnhouses
- 12 A70 east of Rigside
- 13 East Mount Lowther
- 14 Brocketsbrae
- 15 Middlefield Law
- 16 Tinto
- 17 Southern Upland Way near Whing Head
- 18 Lanark

**FIGURE DATA:**  
 The figure has been based on the following data:  
 Layout file: obsvs-250m-BT-45km.shp  
 Terrain data: TSD-OTM.asc  
 Viewer's eye height: 2m above ground level  
 Calculation grid size: 50m

**Notes:**  
 This drawing is based upon computer generated Zone of Theoretical Visibility (ZTV) studies produced using the Viewshed routine in the Visibility Analysis plugin for QGIS.  
 The areas shown are the maximum theoretical visibility, taking topography into account.  
 This visibility map is based on a "bare earth" model of the landscape and does not show any effects of screening from obstacles such as buildings and vegetation.  
 The ZTV includes an adjustment that allows for Earth's curvature and light refraction. It is based on a DTM and has a 50m resolution.

# Viewpoint 1: B740 South of Site

PREDICTED VIEW



Photomontage showing scoping layout -  
11 turbines @ 250m to blade tip height

# Viewpoint 1: B740 South of Site

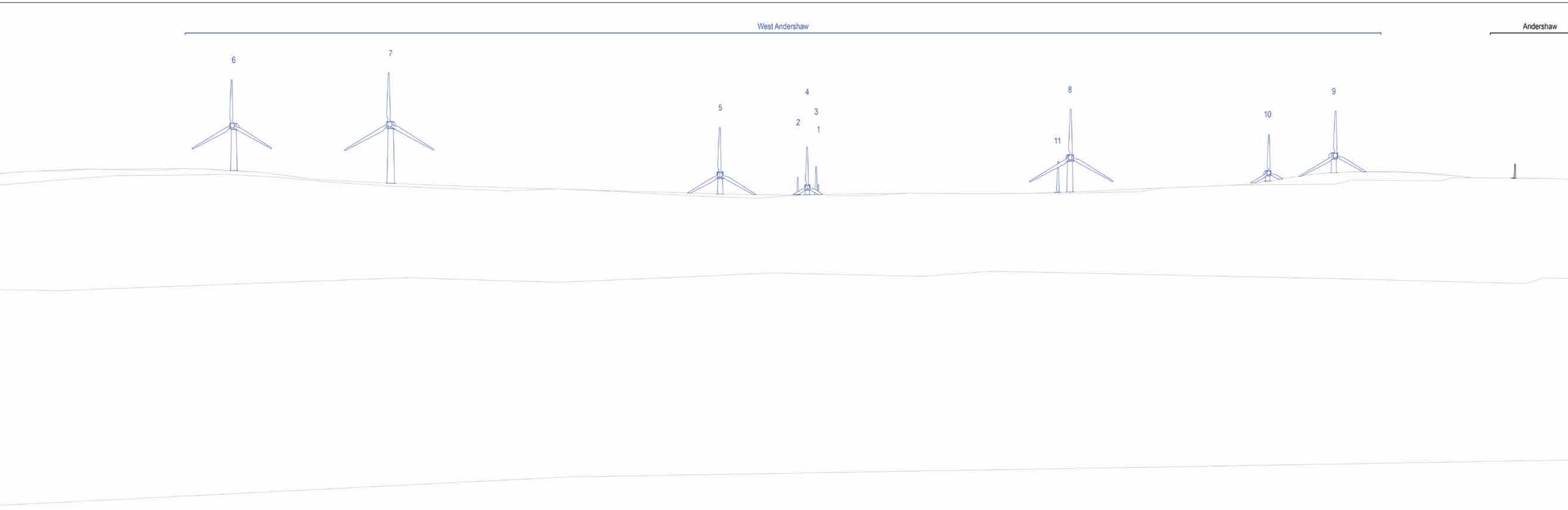
PREDICTED VIEW  
(WITH TURBINE LOCATION MARKERS)



Photomontage showing scoping layout -  
11 turbines @ 250m to blade tip height

# Viewpoint 1: B740 South of Site

## WIREFRAME



Photomontage showing scoping layout -  
11 turbines @ 250m to blade tip height

## Viewpoint 4: Crawfordjohn

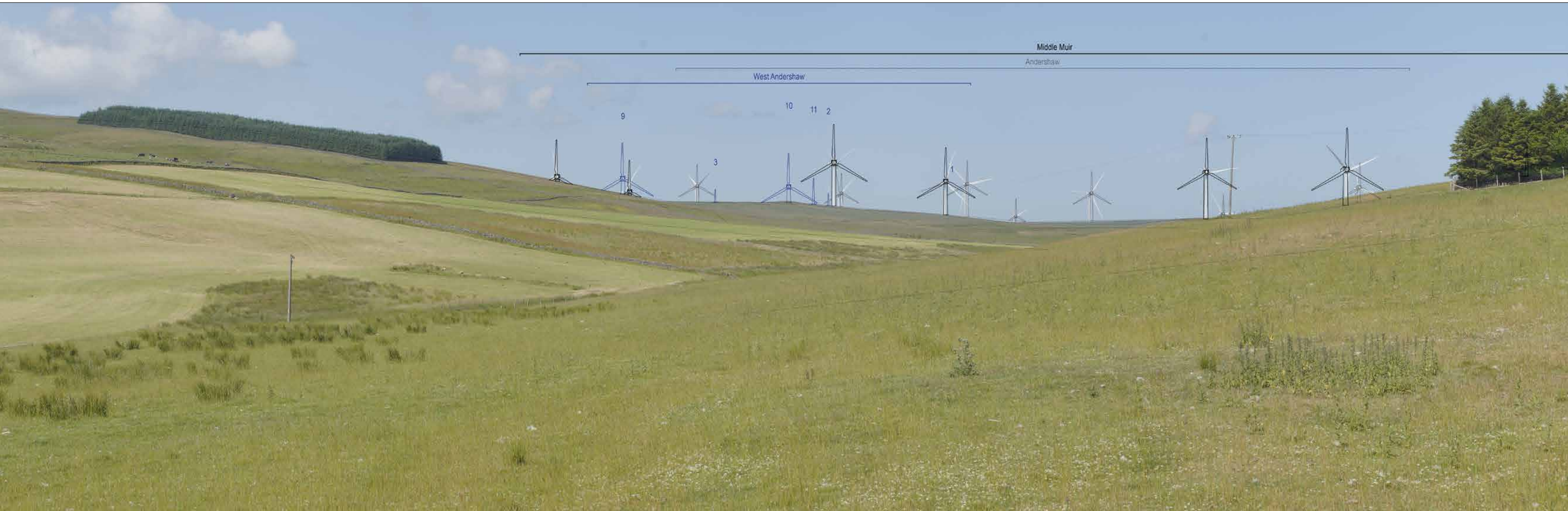
PREDICTED VIEW



Photomontage showing scoping layout -  
11 turbines @ 250m to blade tip height

# Viewpoint 4: Crawfordjohn

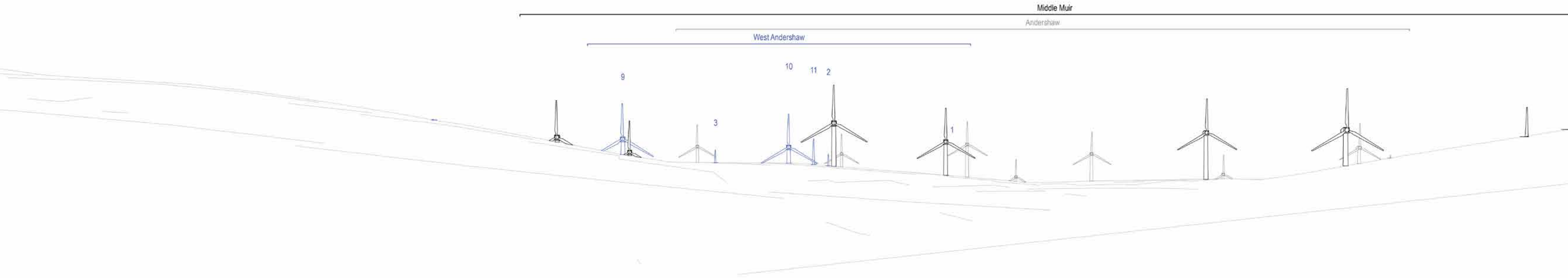
PREDICTED VIEW  
(WITH TURBINE LOCATION MARKERS)



Photomontage showing scoping layout -  
11 turbines @ 250m to blade tip height

# Viewpoint 4: Crawfordjohn

## WIREFRAME



Photomontage showing scoping layout -  
11 turbines @ 250m to blade tip height



# Viewpoint 7: Douglas Castle

PREDICTED VIEW



Photomontage showing scoping layout -  
11 turbines @ 250 m to blade tip height

# Viewpoint 7: Douglas Castle

PREDICTED VIEW  
(WITH TURBINE LOCATION MARKERS)

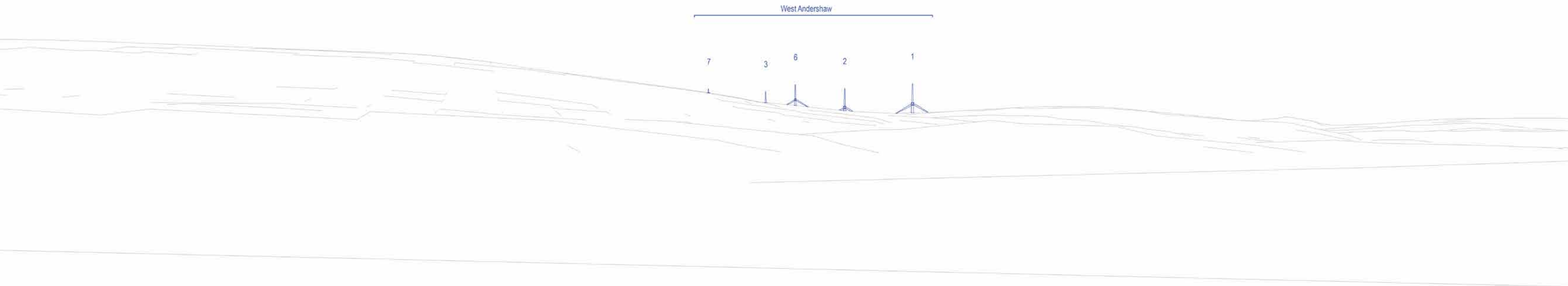


Photomontage showing scoping layout -  
11 turbines @ 250 m to blade tip height

# Viewpoint 7: Douglas Castle

---

## WIREFRAME



Photomontage showing scoping layout -  
11 turbines @ 250 m to blade tip height

[Return to the Virtual Exhibition](#)